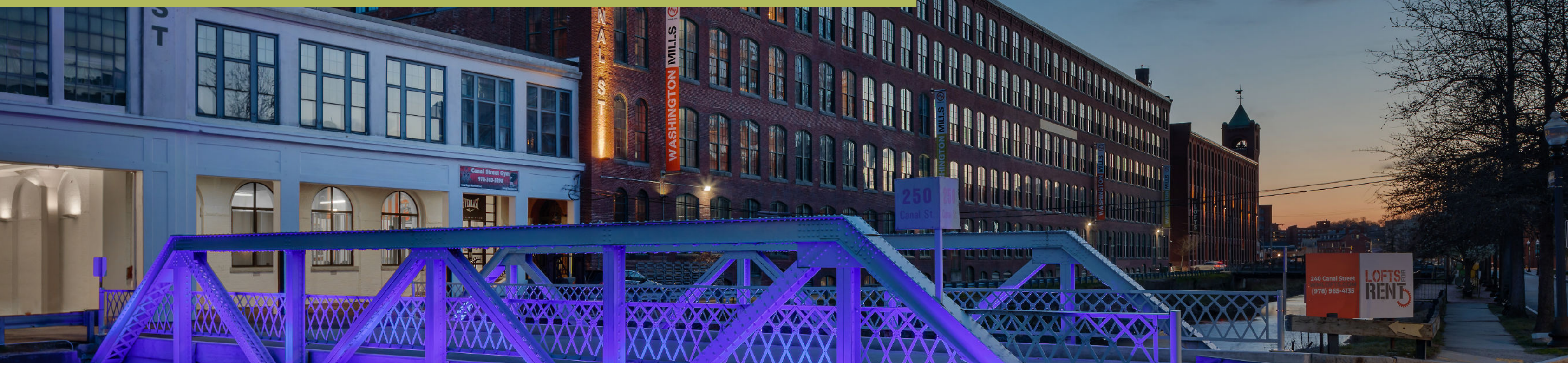
 (978) 208-2848

 [wm240@princetonproperties.com](mailto:wm240@princetonproperties.com)

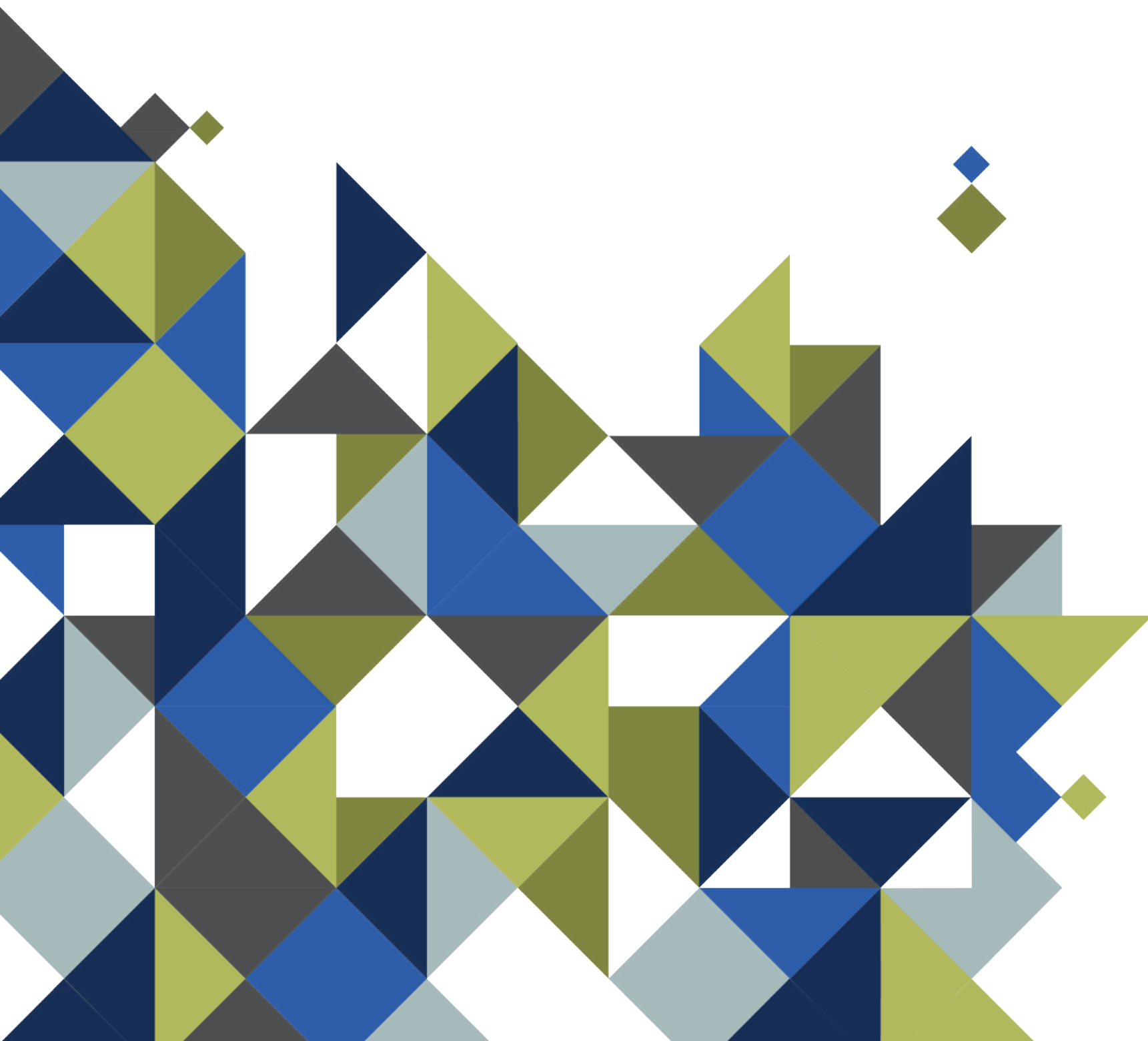


LIVE AT

# WASHINGTON MILL 240 APARTMENTS

Washington Mill 240 in Methuen, MA, is your ideal living destination, blending historic character with contemporary comfort. Just 30 miles from Boston and 25 miles from Manchester, NH, our community offers both convenience and tranquility. With easy access to Route 93 and Route 495, commuting is a breeze. Methuen's vibrant community provides everything from top-notch private schools to scenic rail trails, parks, and shopping, making it a lively yet peaceful place to call home.

At Washington Mill 240, residents rest easy knowing our dedicated management and 24/7 emergency maintenance teams are always ready to assist.





# FIND THE APARTMENT

that suits your needs.

Our studio, one, and two-bedroom lofts feature exposed brick, high ceilings, and old-growth wood beams, blending historic elegance with modern conveniences like in-unit washers and dryers, oversized windows, and flexible living spaces. Enjoy high-end amenities like a rooftop deck, fitness room, and a common lounge with a widescreen TV, billiards, wet bar, and WiFi. Discover the perfect blend of historic charm, modern luxury, and community at Washington Mill 240.



**Studio 1 Bath**  
794 Sq Ft



**1 Bed 1 Bath**  
876 Sq Ft



**1 Bed 1.5 Bath**  
827 Sq Ft



**1 Bed 1.5 Bath**  
1211 Sq Ft



**2 Bed 1.5 Bath**  
1414 Sq Ft



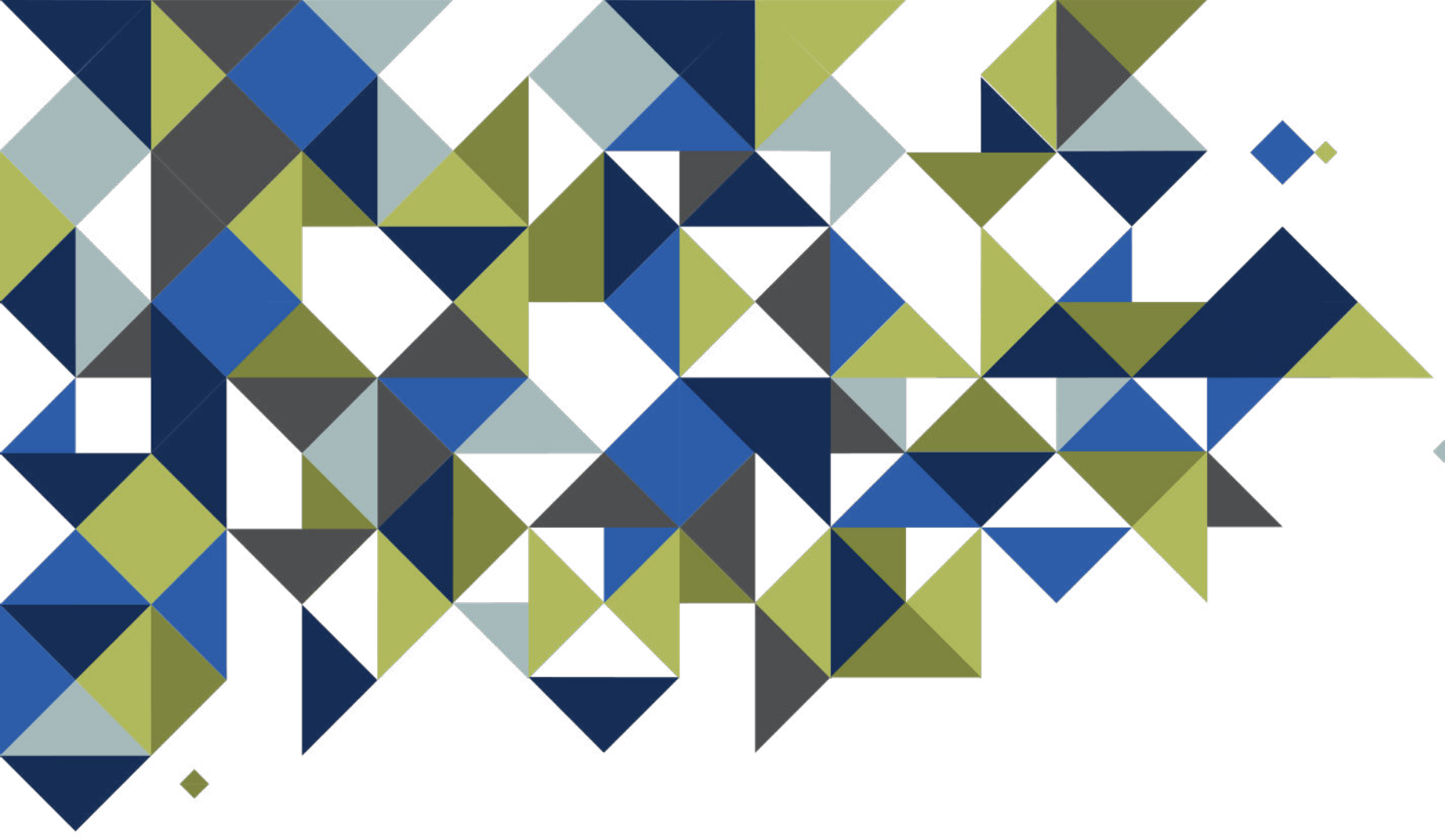
**1 Bed 1 Bath**  
805 Sq Ft



**Studio 1 Bath**  
995 Sq Ft



**2 Bed 2 Bath**  
1668 Sq Ft



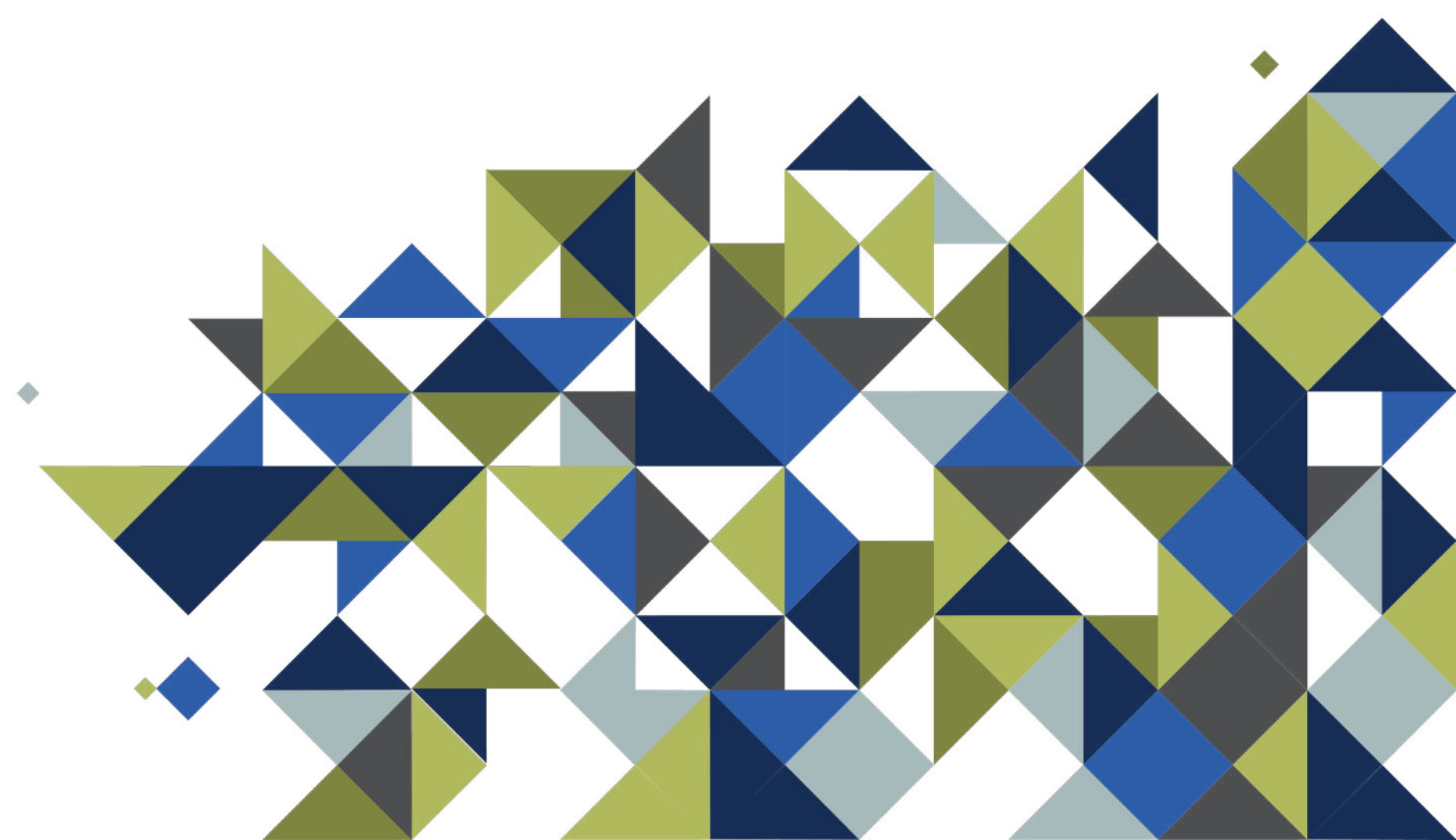
**FIND  
THE  
PLACE**  
to call  
home.



**2 Bed 2 Bath**  
989 Sq Ft



**2 Bed 2 Bath**  
1092 Sq Ft





# YOUR APARTMENT

- ◇ Original Wood Beams & Ceilings
- ◇ Spacious Closets
- ◇ Oversized Windows
- ◇ Individually Controlled Thermostats
- ◇ Quartz Countertops
- ◇ Fully Appointed Kitchens
- ◇ Microwave
- ◇ Beautiful Views
- ◇ Washer/Dryer
- ◇ High Ceilings
- ◇ Spacious and Functional Floorplans
- ◇ Kitchen Islands
- ◇ Window Coverings
- ◇ Renovated
- ◇ Walk-In Closets
- ◇ New Cabinetry
- ◇ Stainless Steel Appliances
- ◇ Energy Efficient Lighting
- ◇ Eat-In Breakfast Bars
- ◇ Ceramic Tiled Bathroom
- ◇ ADA Accessibility
- ◇ Vinyl Flooring in Kitchen and Living Room





# YOUR COMMUNITY

- ◇ Online Rent Pay and Resident Services Through Resident Portal
- ◇ On site Professional Management Team
- ◇ Dog Park
- ◇ Community Lounge with Fireplace and Coffee Bar
- ◇ Riverfront Park with Fire Pit and Lawn Games
- ◇ Electric Car Charging Station
- ◇ Covered Parking Available
- ◇ Intercom System
- ◇ Community Grilling Area
- ◇ Fitness Center
- ◇ Common Workspaces
- ◇ Pet Friendly (Some Breed Restrictions Apply)
- ◇ Roof Top Deck
- ◇ Reservable Extra Storage
- ◇ Smoke Free
- ◇ Winter Snow Removal
- ◇ Elevator
- ◇ 24 Hour Emergency Maintenance
- ◇ Flexible Rent Payments with FLEX
- ◇ Virtual Tours Available



[www.princetonproperties.com](http://www.princetonproperties.com)

