



LIVE AT

THE CHANDLER APARTMENTS

The Chandler Apartments is your ideal living destination in the vibrant community of Bedford, NH. Situated in the heart of major shopping, dining, and transportation hubs, our brand-new community offers unmatched convenience. Whether you're looking for a studio, 1, or 2 bedroom apartment, our open-concept designs and high-end finishes cater to a modern lifestyle. With easy access to Rt. 3 and the Everett Turnpike, and within walking distance of Whole Foods, Starbucks, and Marshall's, everything you need is at your doorstep.

At The Chandler, residents rest easy with our dedicated management and 24/7 emergency maintenance teams, always ready to assist.

The Chandler offers modern living with stunning rooftop views, pet-friendly apartments, and a work-from-home setup in a common area. Located just 50 miles from Boston and near

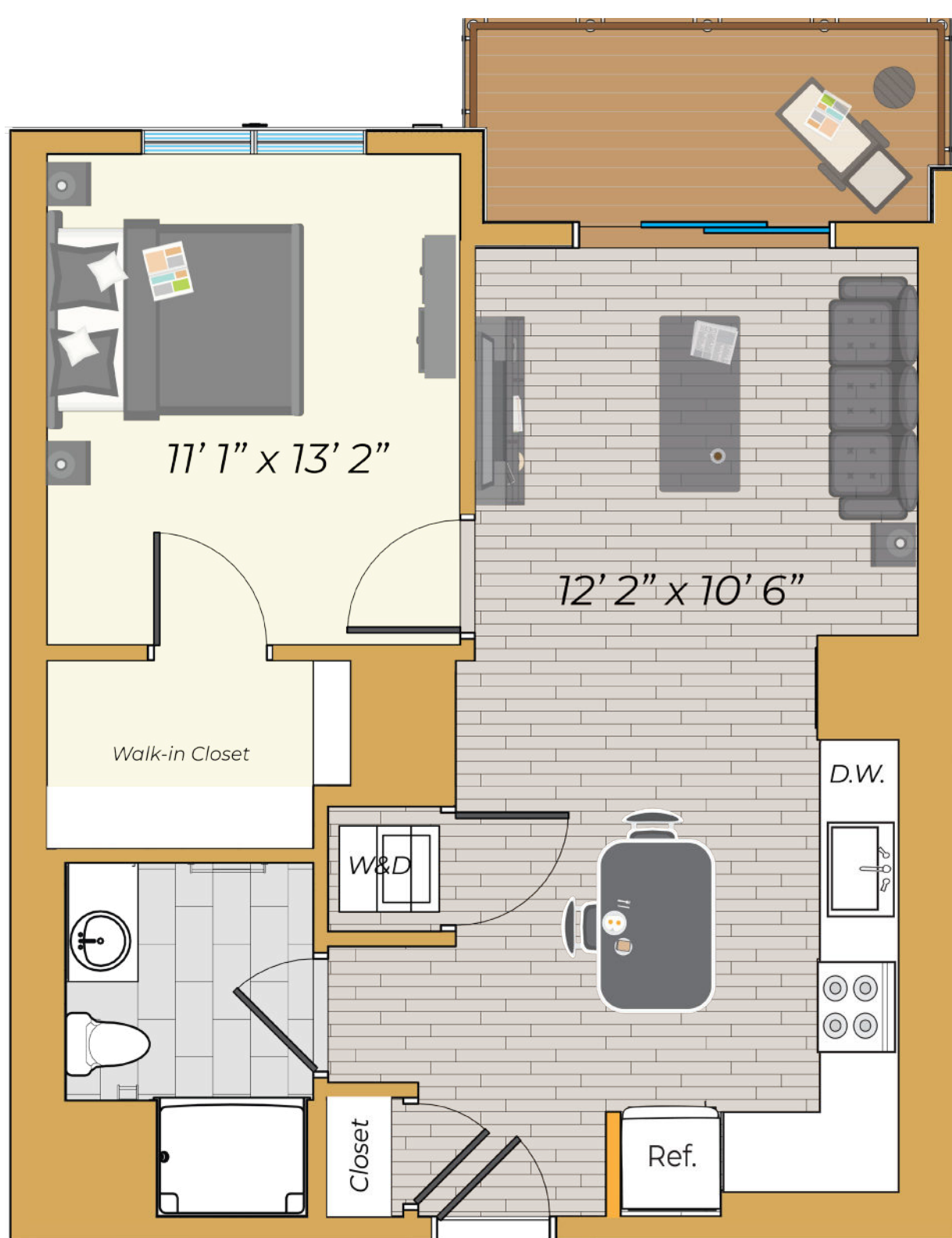




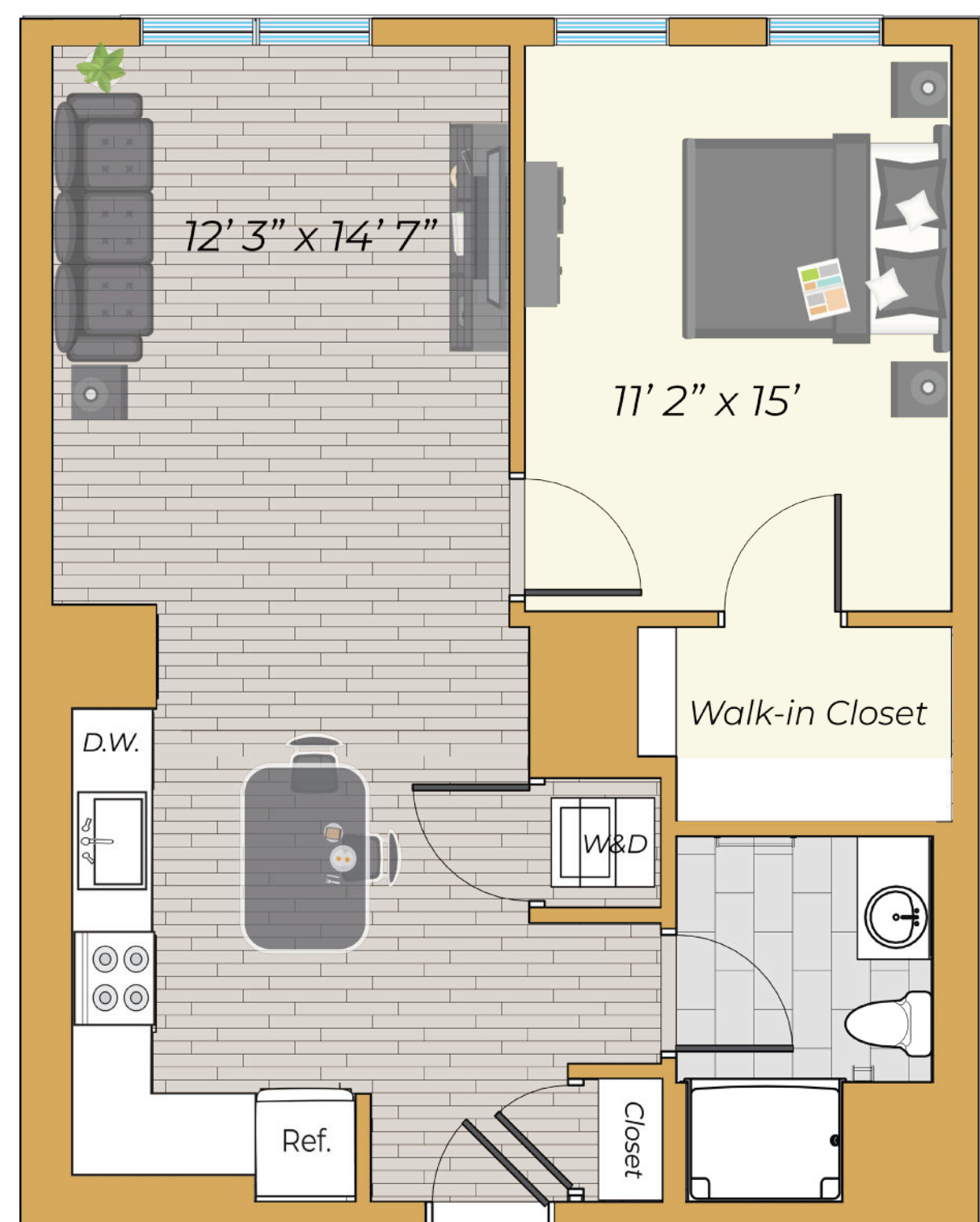
FIND THE APARTMENT

that suits your needs.

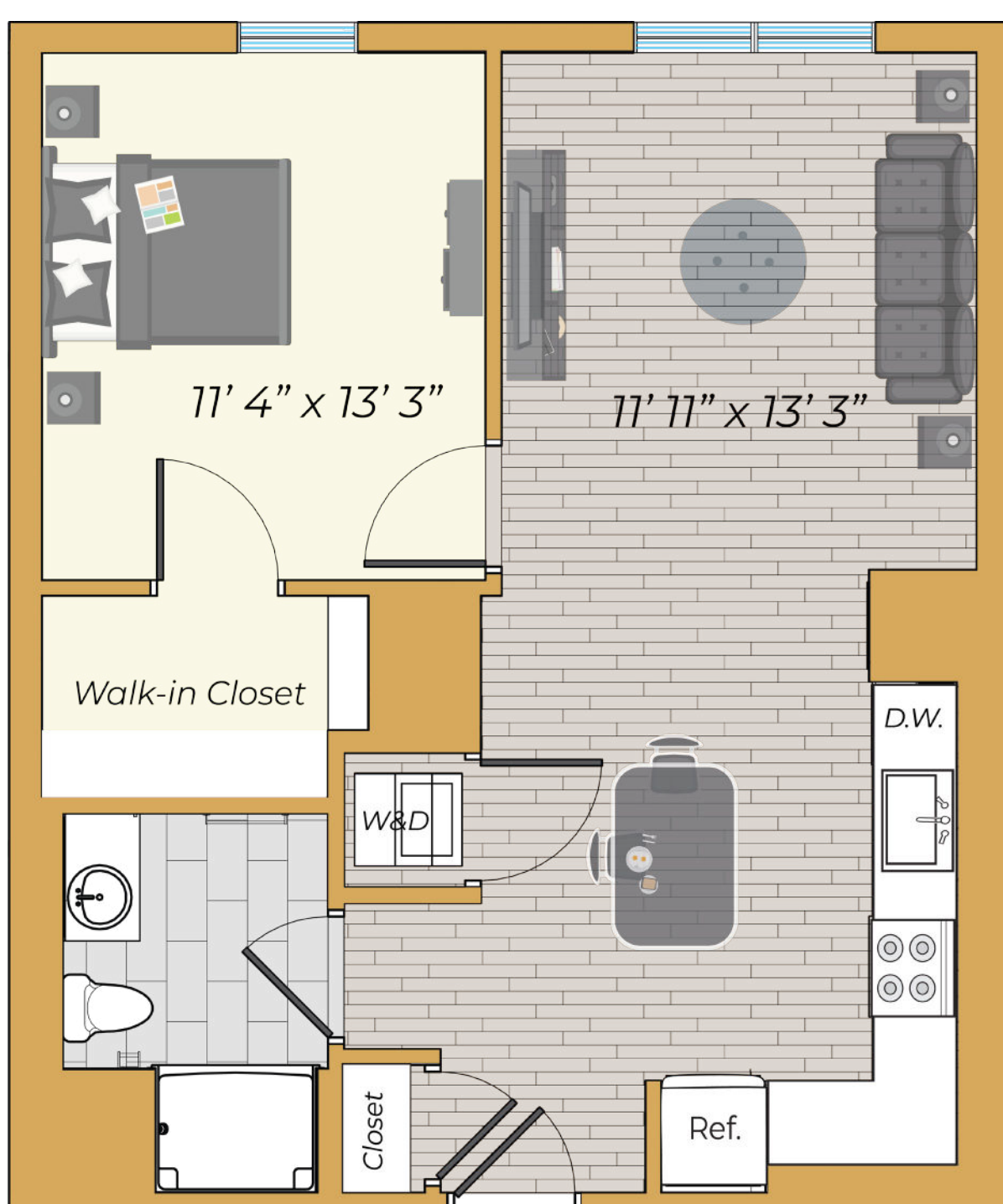
NH's largest city, Bedford offers top-rated schools and numerous job opportunities. Enjoy easy commutes to local colleges and universities. Discover the perfect blend of comfort, convenience, and community at The Chandler Apartments in Bedford.



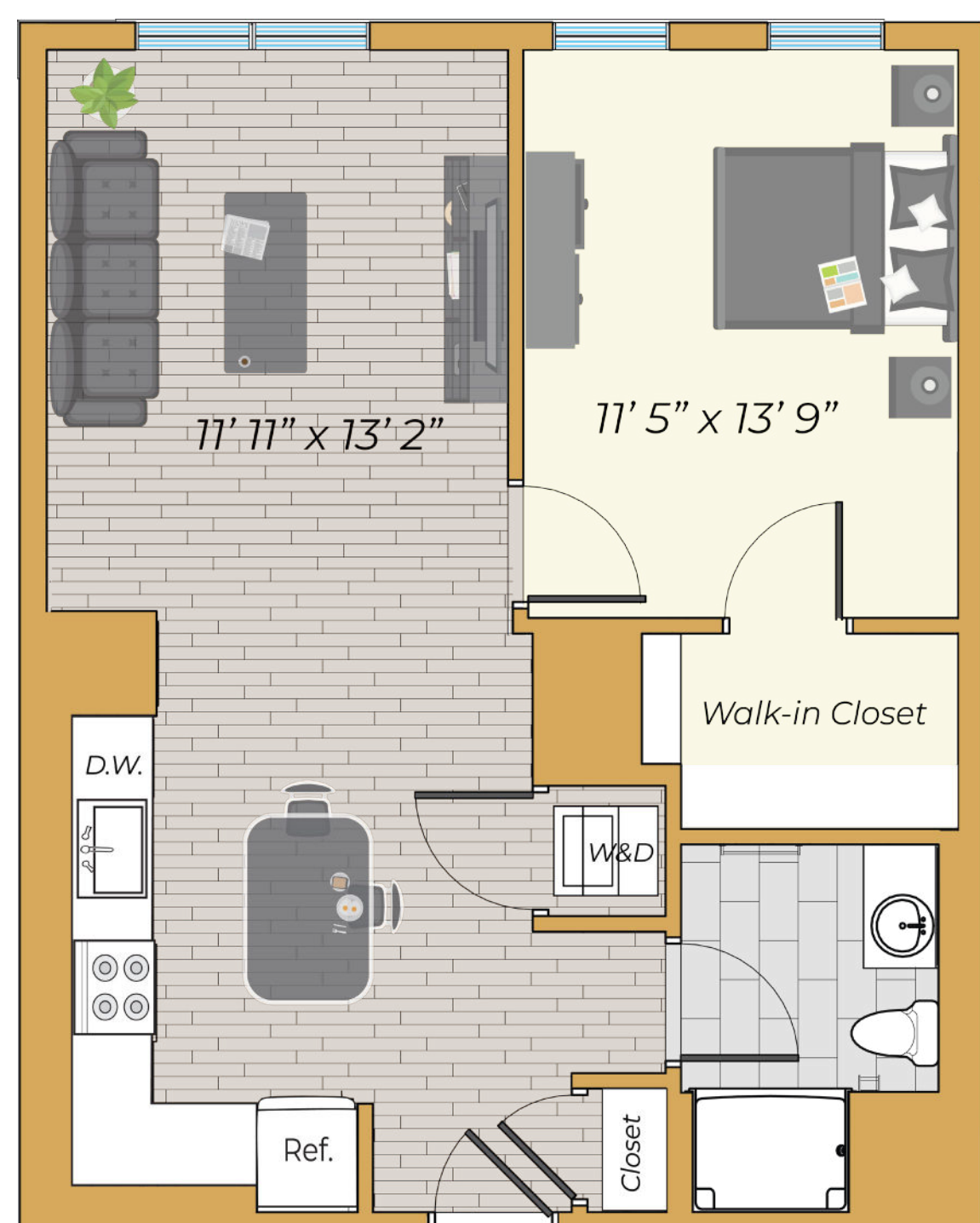
Studio 1 Bath
552 Sq Ft



1 Bed 1 Bath
776 Sq Ft

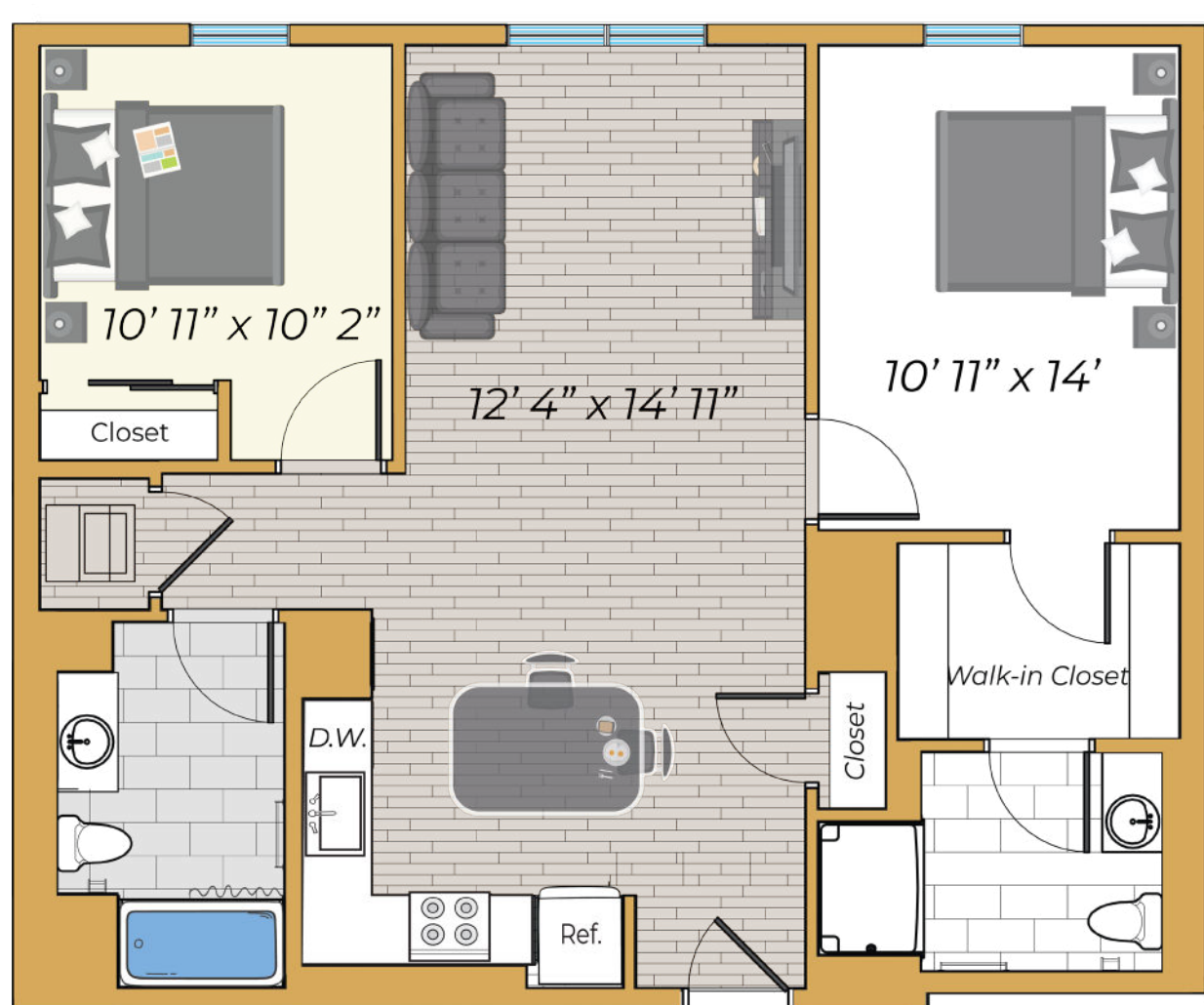


1 Bed 1 Bath
576 - 771 Sq Ft

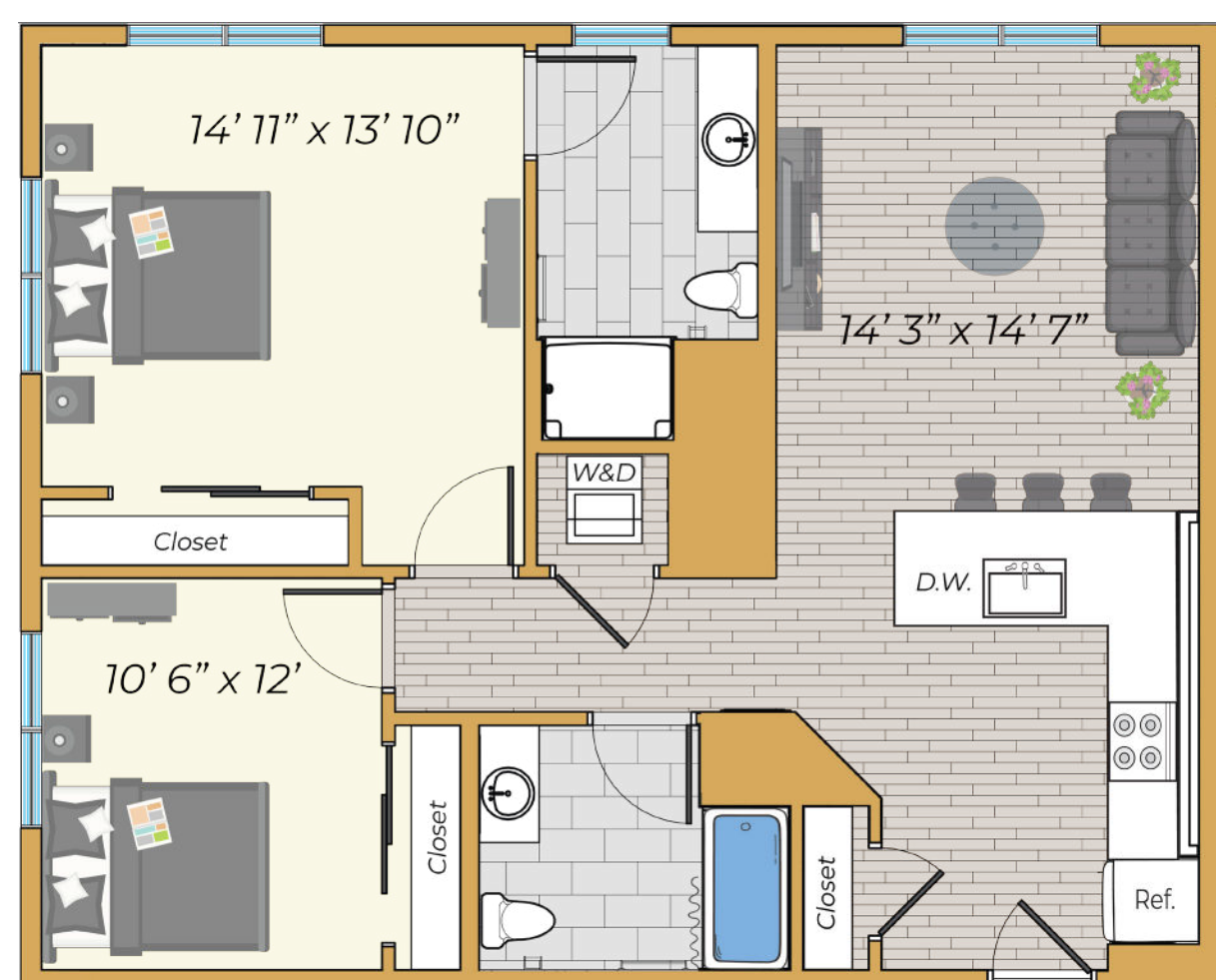


1 Bed 1 Bath
576 - 771 Sq Ft

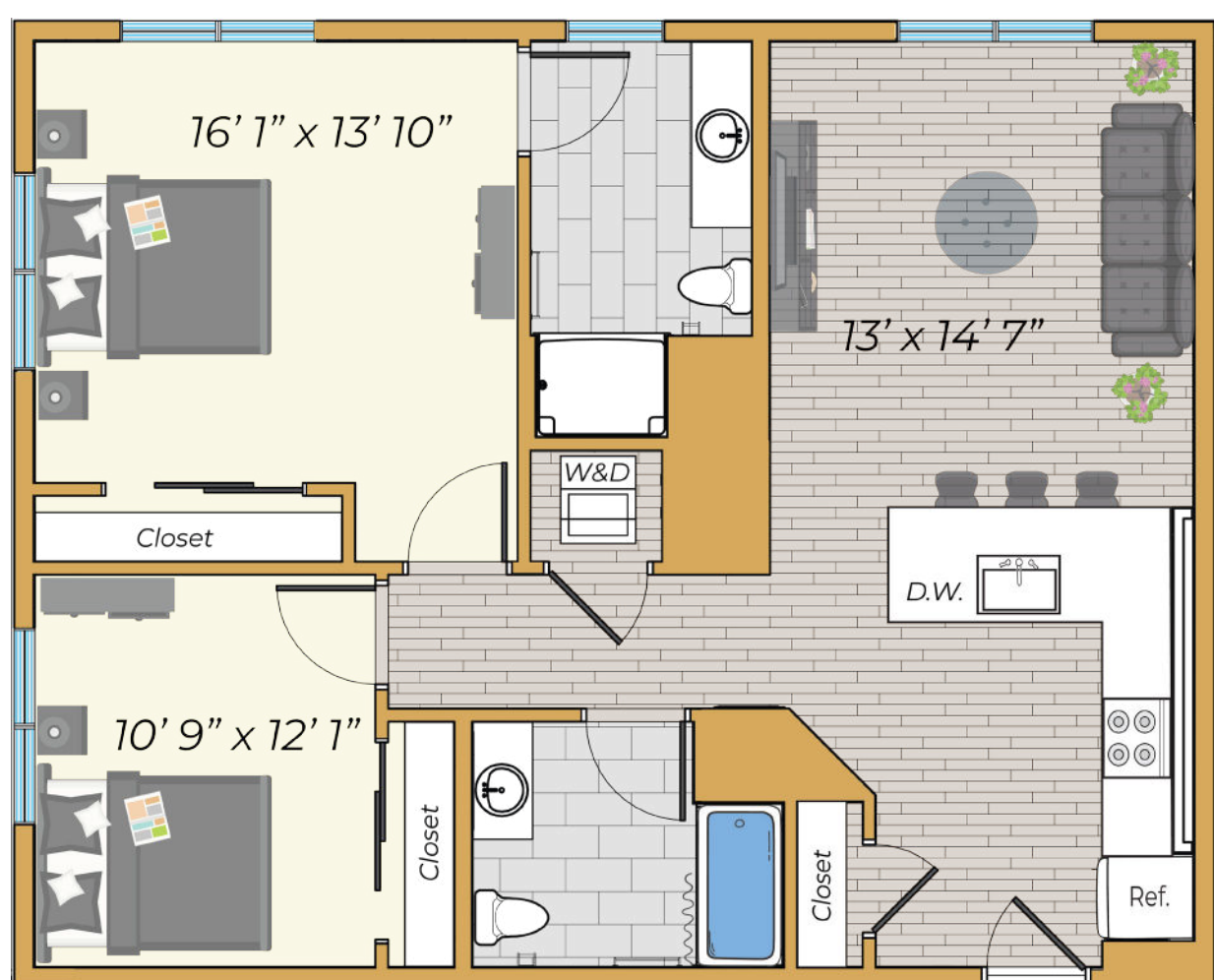
FIND THE PLACE to call home.



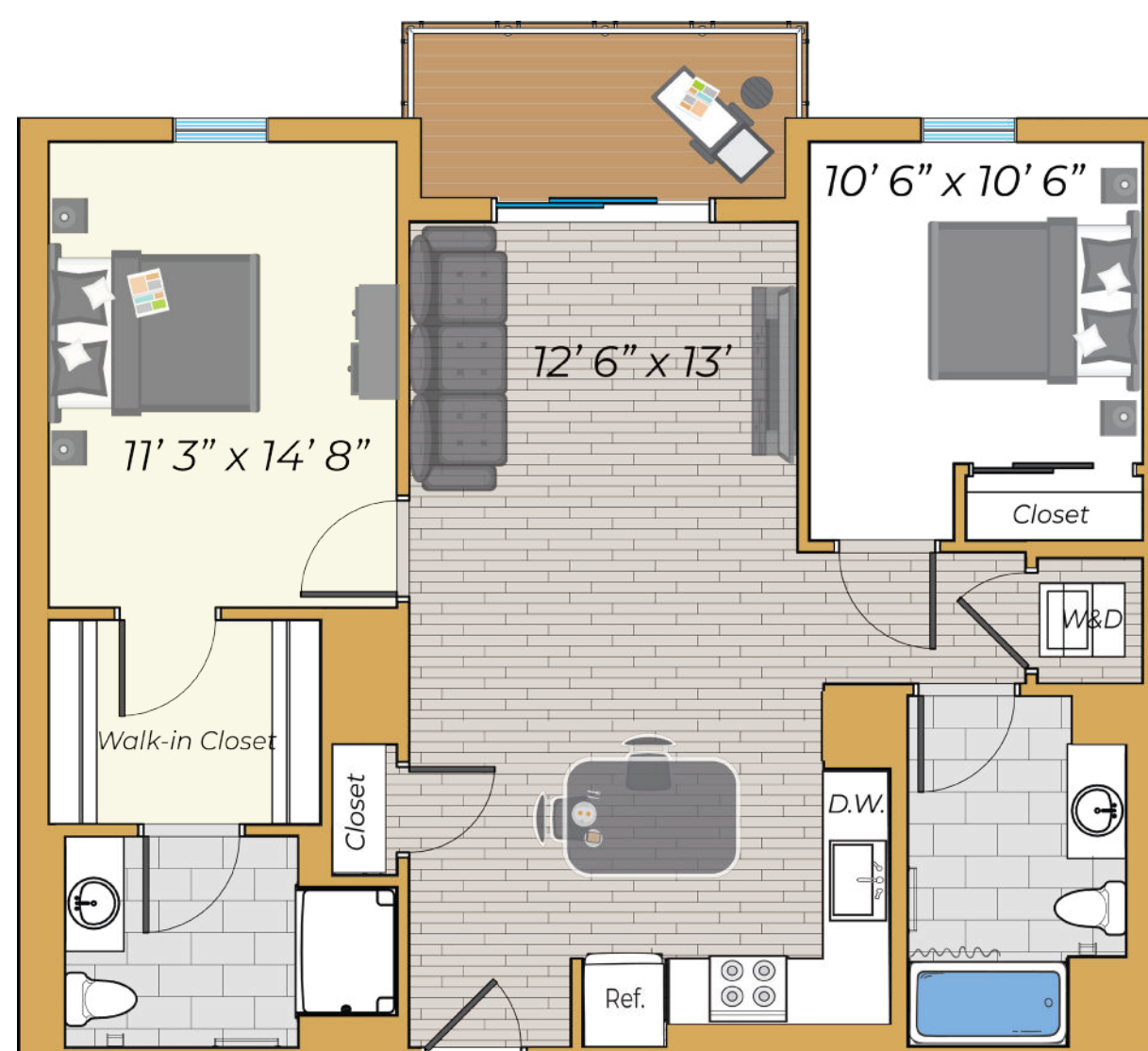
1 Bed 1 Bath
548 Sq Ft



1 Bed 1 Bath
548 Sq Ft



1 Bed 1 Bath
548 Sq Ft



1 Bed 1 Bath
548 Sq Ft



YOUR APARTMENT

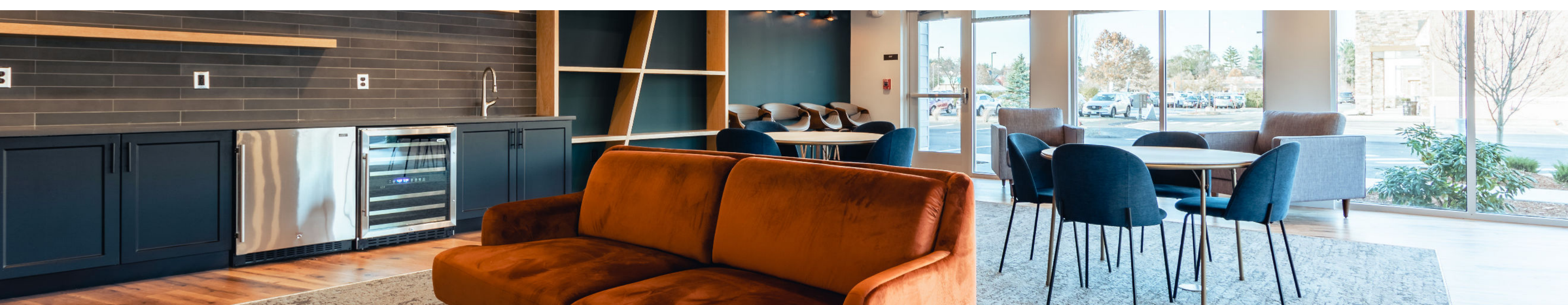
- ◇ Stainless Steel Appliances
- ◇ Spacious Closets
- ◇ Beautiful Views
- ◇ Balconies and Patios
- ◇ Individually Controlled Thermostats with Central Air Conditioning
- ◇ Washer/Dryer
- ◇ High Ceilings
- ◇ ADA Accessibility
- ◇ Window Coverings
- ◇ Walk-In Closets
- ◇ New Cabinetry
- ◇ Porcelain Tile Floor in Bathrooms
- ◇ Dimmer Switches for Kitchen Lighting
- ◇ Microwave
- ◇ Linen Cabinets in Bathrooms in Select Apartments
- ◇ Laundry In Unit
- ◇ Bright & Airy Floorplans
- ◇ Granite Countertops
- ◇ Shaker Style Cabinets





YOUR COMMUNITY

- ◇ Fitness Center
- ◇ Off-Street Parking
- ◇ New Construction
- ◇ Bike parking
- ◇ High Speed Internet Access
- ◇ On-Site Retail
- ◇ Pet Wash Station
- ◇ Common Workspaces
- ◇ Pet Friendly (Some Breed Restrictions Apply)
- ◇ Roof Top Deck
- ◇ Reservable Extra Storage
- ◇ Scheduled Resident Activities
- ◇ Easy Highway Access
- ◇ Elevator
- ◇ Smoke Free
- ◇ Beautiful Walking Path
- ◇ ButterflyMX Controlled Access Entry System
- ◇ Winter Snow Removal
- ◇ Pet Spa
- ◇ Rooftop Deck
- ◇ 24 Hour Package Concierge
- ◇ On Site Management
- ◇ 24 Hour Emergency Maintenance
- ◇ Conference Room
- ◇ Picnic Areas
- ◇ Gourmet Coffee Bar
- ◇ Online Rent Payment and Maintenance Request
- ◇ Resident Lounge
- ◇ Flexible Rent Payments with Flex
- ◇ Brand New Dog Park
- ◇ Plant-Sitting



www.princetonproperties.com

