

PRINCETON  
VILLAGE



(207) 536-5446



backcove@princetonproperties.com

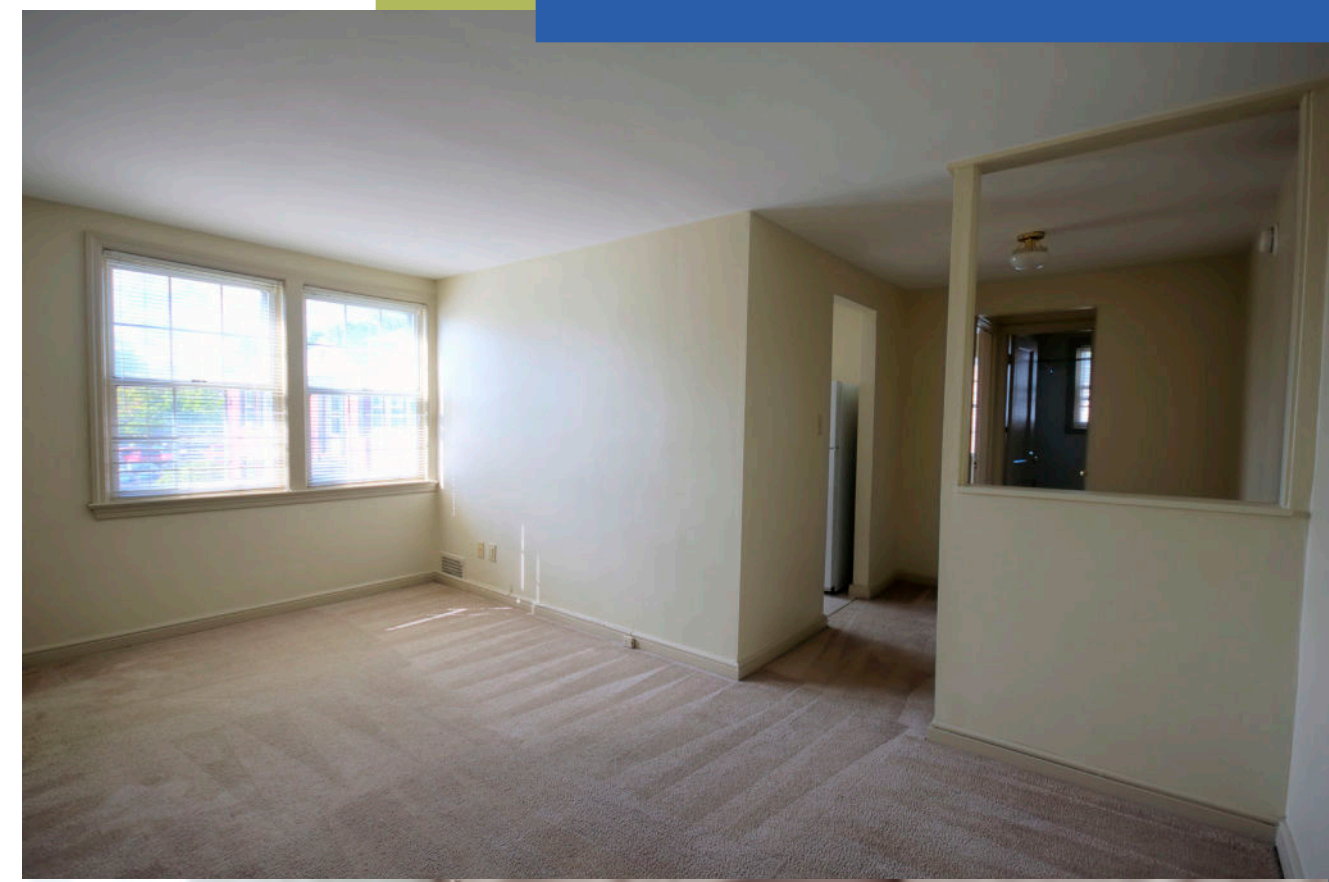


LIVE AT

# PRINCETON VILLAGE APARTMENTS

Princeton Village Apartments is your ideal living destination in Portland, ME. Centrally located near the University of Southern Maine, Downtown Portland, and the Back Cove area, our community offers unmatched convenience. With easy access to major highways, commuting is a breeze whether you're heading to work or exploring the city. Enjoy the charm of our brick construction, louvered shutters, and wrought-iron railings, all designed with durability and style in mind.

At Princeton Village, residents rest easy with our dedicated management and 24/7 emergency maintenance teams, always ready to assist.



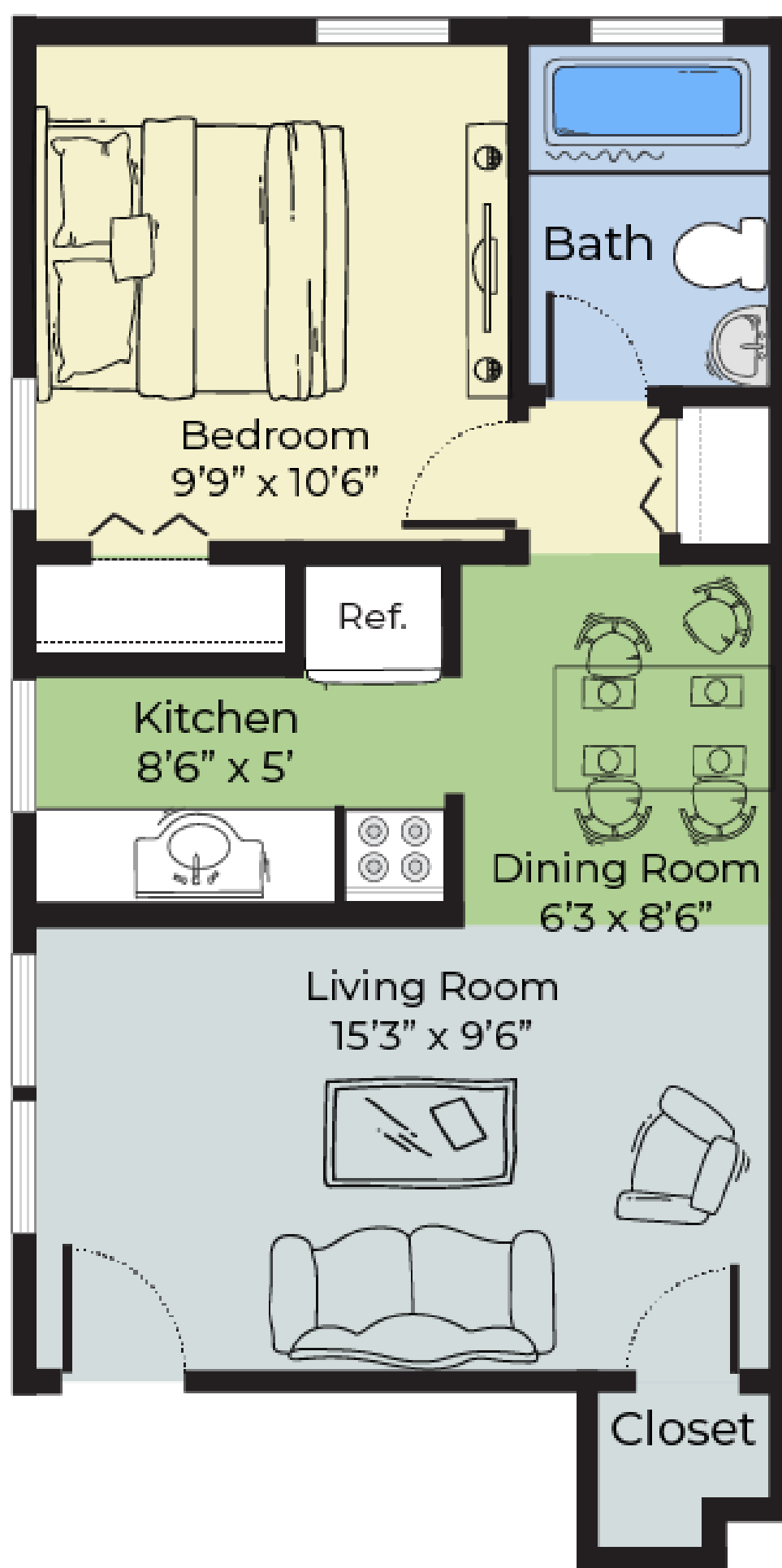




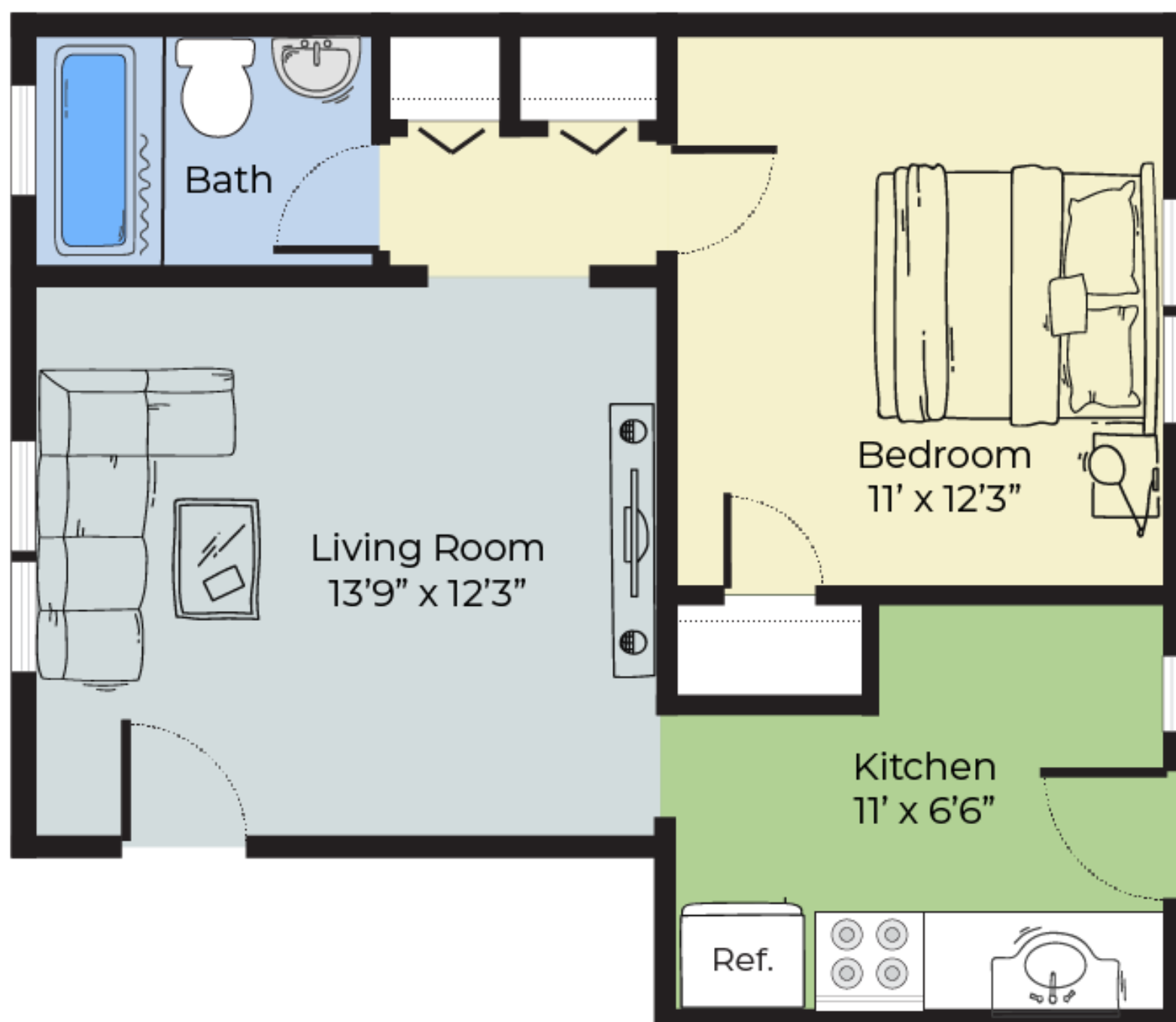
# FIND THE APARTMENT

that suits your needs.

Princeton Village offers modern living with classic touches like hardwood floors in many one-bedroom apartments. Heat and hot water are included, enhancing the comfort and ease of living here. With a perfect blend of timeless architecture and contemporary amenities, you'll love your new home and exploring all that Portland has to offer. Discover the ideal combination of convenience, charm, and community at Princeton Village Apartments.



2 Bed 1 Bath  
800 Sq Ft



2 Bed 1 Bath  
800 Sq Ft





# YOUR APARTMENT

- ◇ Fully Equipped Kitchens
- ◇ Large Closets
- ◇ Window Coverings
- ◇ Cable Ready
- ◇ Refrigerator
- ◇ Premium Wall-to-Wall Carpeting







# YOUR COMMUNITY

- ◇ Off-Street Parking
- ◇ Cat Friendly
- ◇ Scheduled Resident Activities
- ◇ Laundry Facilities
- ◇ Smoke Free
- ◇ Affordable Housing Program
- ◇ Virtual Tours Available
- ◇ Heat Included
- ◇ Hot Water Included
- ◇ On Site 24 Hour Professional Management
- ◇ Cable Television Ready
- ◇ Easy Highway Access
- ◇ Flexible Rent Payments with FLEX
- ◇ Winter Snow Removal



[www.princetonproperties.com](http://www.princetonproperties.com)

