



LIVE AT

# MILL & 3 APARTMENTS

Mill & 3 in Chelmsford is your ideal living destination, offering luxury and convenience. Located just off Route 3, our one and two-bedroom apartments make commuting effortless, with easy access to Downtown Lowell, tax-free shopping in Nashua, and quick trips to Burlington and Boston via I-95. Chelmsford's charming downtown, with popular spots like Nobo and Fishbone's, is less than 10 minutes away, providing dining and shopping options close to home.

At Mill & 3, residents can rest easy with our dedicated management and maintenance teams. Maintenance issues are promptly addressed through our Resident Portal, and our experienced leasing staff is always ready to assist.

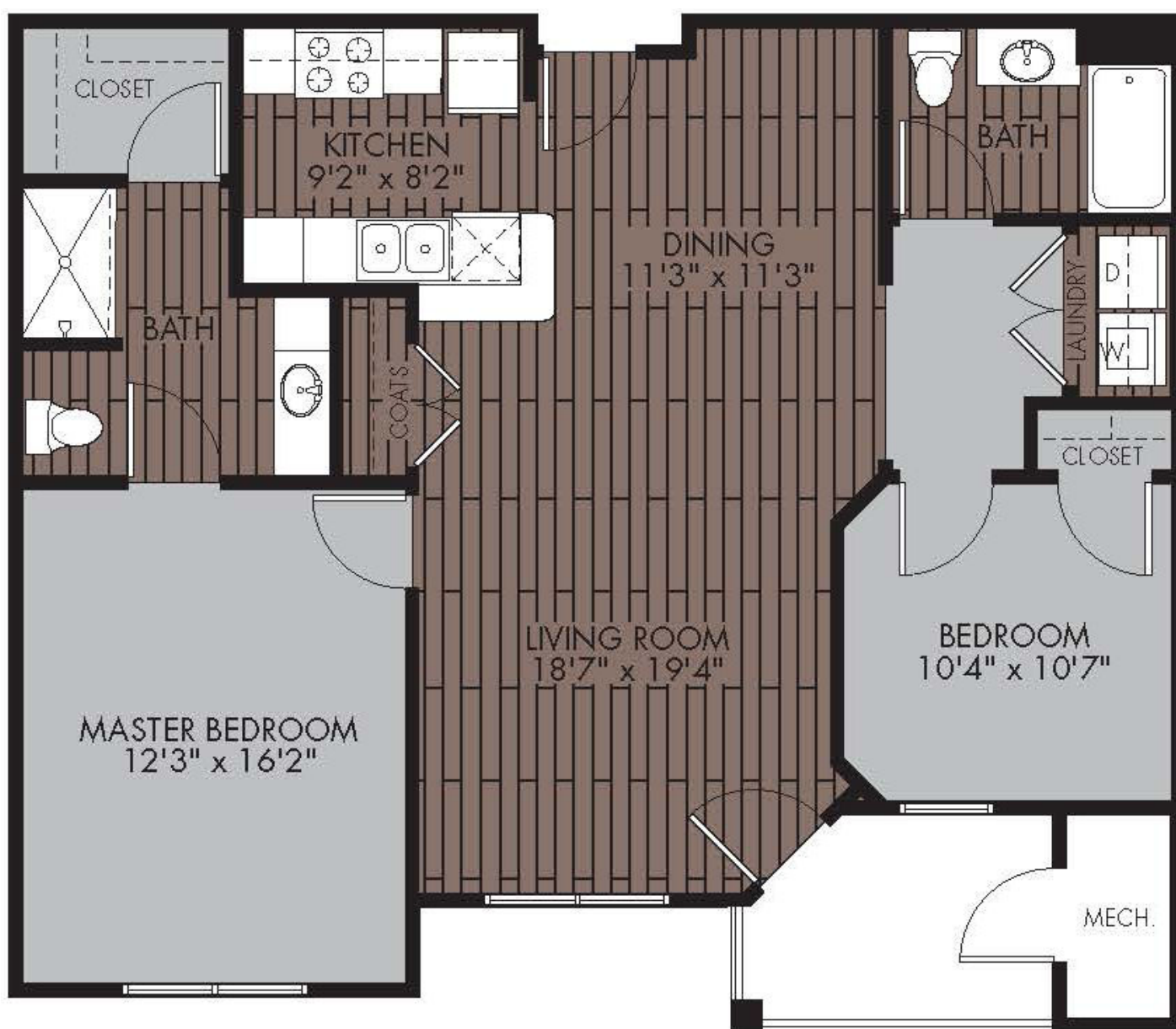




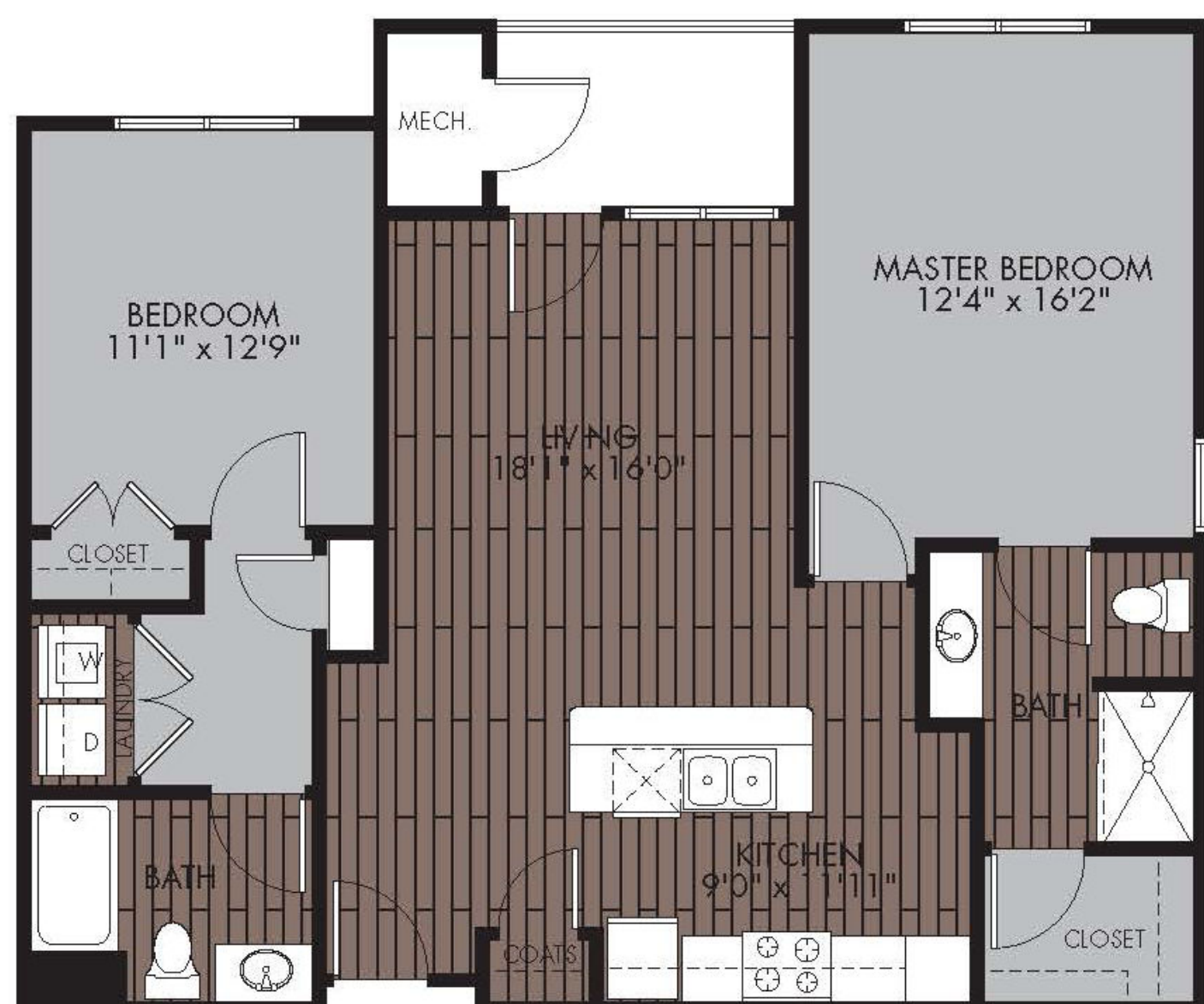
# FIND THE APARTMENT

that suits your needs.

Our community offers first-class amenities, including direct access garage parking, a clubhouse, fitness center, and a beautiful swimming pool. Each apartment features high-end finishes like granite countertops, luxury plank flooring, in-unit washer and dryer, walk-in closets, and private patios or balconies. Discover comfort, convenience, and style at Mill & 3 in Chelmsford.



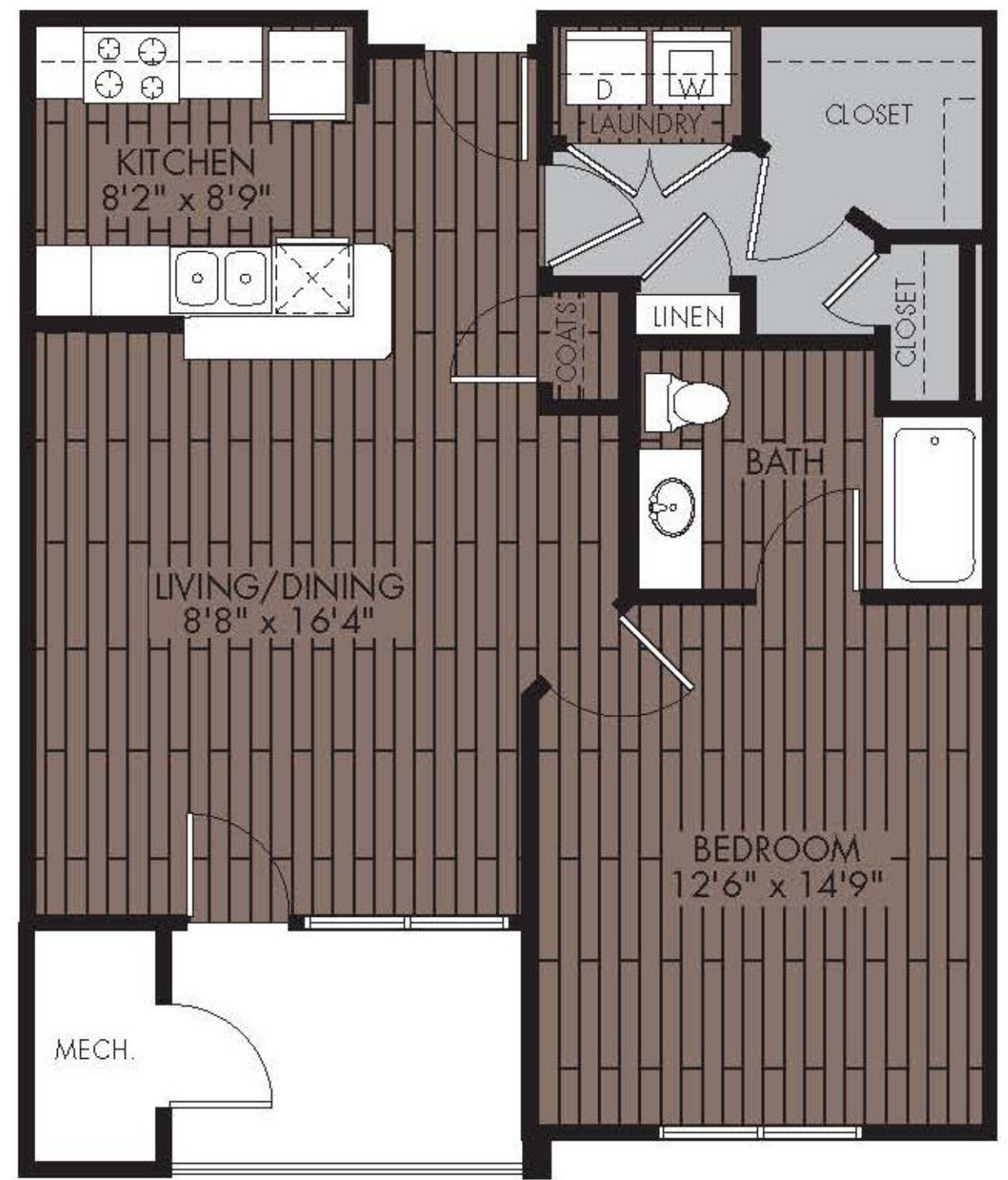
**2 Bed 2 Bath**  
1094 Sq Ft



**2 Bed 2 Bath**  
1094 Sq Ft



**2 Bed 1 Bath**  
1225 Sq Ft



**1 Bed 1 Bath**  
784 Sq Ft

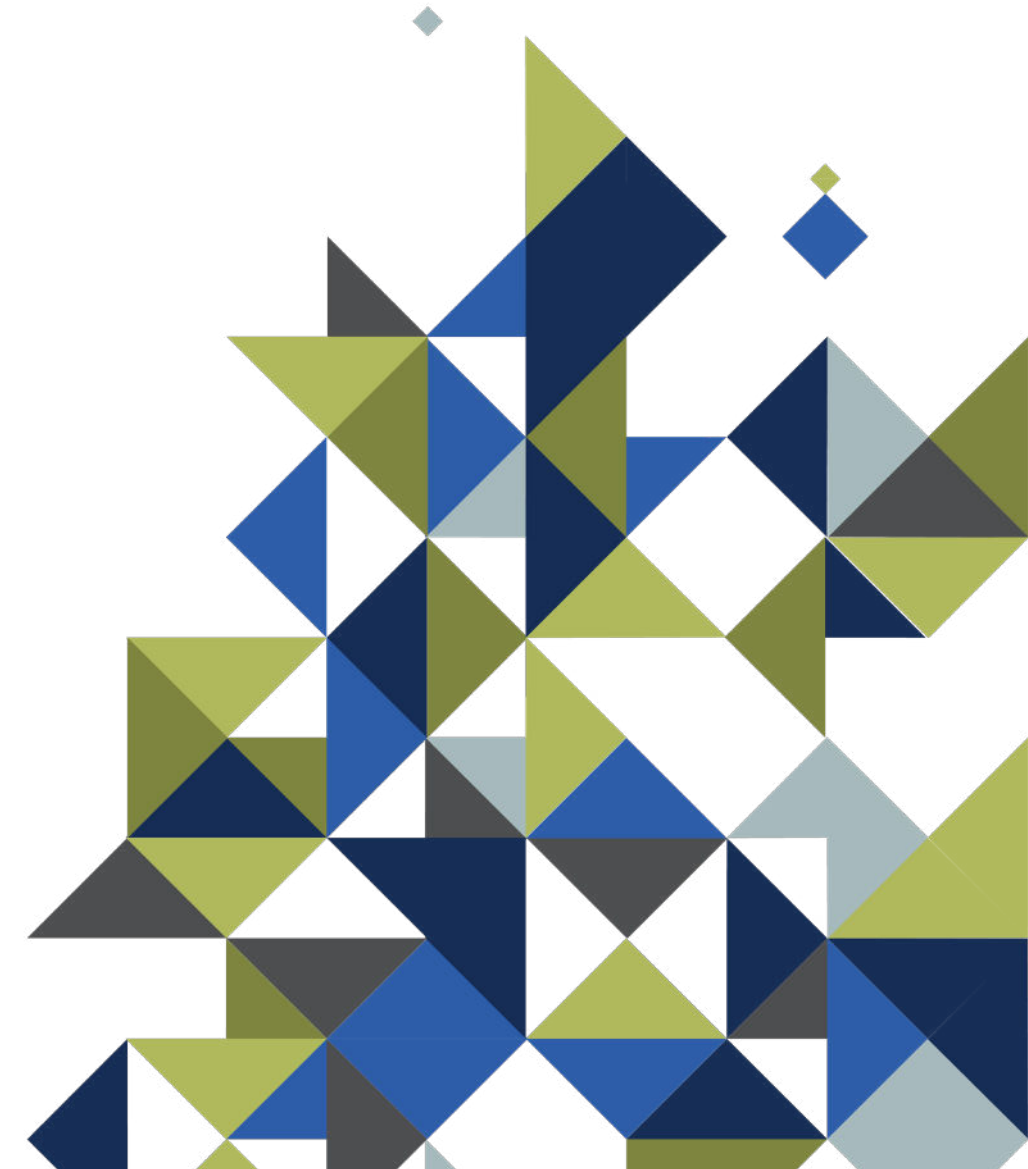
**FIND  
THE  
PLACE**  
to call  
home.



**1 Bed 1 Bath**  
790 Sq Ft



**1 Bed 1 Bath**  
840 Sq Ft





# YOUR APARTMENT

- ◇ Fully Appointed Kitchens with Stainless Steel Appliances
- ◇ Microwave
- ◇ Dishwasher
- ◇ Spacious Closets
- ◇ Balconies
- ◇ Oversized Windows
- ◇ Individually Controlled Thermostats
- ◇ In Unit Washer/Dryer
- ◇ High Ceilings
- ◇ Spacious and Functional Floorplans
- ◇ ADA Accessibility in Select Units
- ◇ Kitchen Islands
- ◇ Walk-In Closets
- ◇ Vinyl Flooring
- ◇ Beautiful Views
- ◇ Central Air Conditioning
- ◇ Controlled Access





# YOUR COMMUNITY

- ◇ Underground Parking Available in Select Buildings
- ◇ Off-Street Parking
- ◇ High Speed Internet Access
- ◇ Community Grilling Area
- ◇ Fitness Center
- ◇ Pet Friendly (Some Breed Restrictions Apply)
- ◇ Salt Water Swimming Pool
- ◇ Affordable Housing Program
- ◇ Easy Highway Access
- ◇ Elevator in Select Buildings
- ◇ Playground
- ◇ Winter Snow Removal
- ◇ Preferred Local School System
- ◇ Intercom System
- ◇ Club House
- ◇ On Site Professional Management
- ◇ Package Concierge
- ◇ New Construction
- ◇ Smoke Free
- ◇ Online Rent Pay
- ◇ 24 Hour Emergency Maintenance
- ◇ On Site Maintenance
- ◇ Virtual Tours Available
- ◇ Flexible Rent Payments with FLEX
- ◇ 24 Hour Off-Site Leasing Office



[www.princetonproperties.com](http://www.princetonproperties.com)

