


BOULDER PARK  
APARTMENTS

 (603) 389-6595

 [boulderpark@princetonproperties.com](mailto:boulderpark@princetonproperties.com)

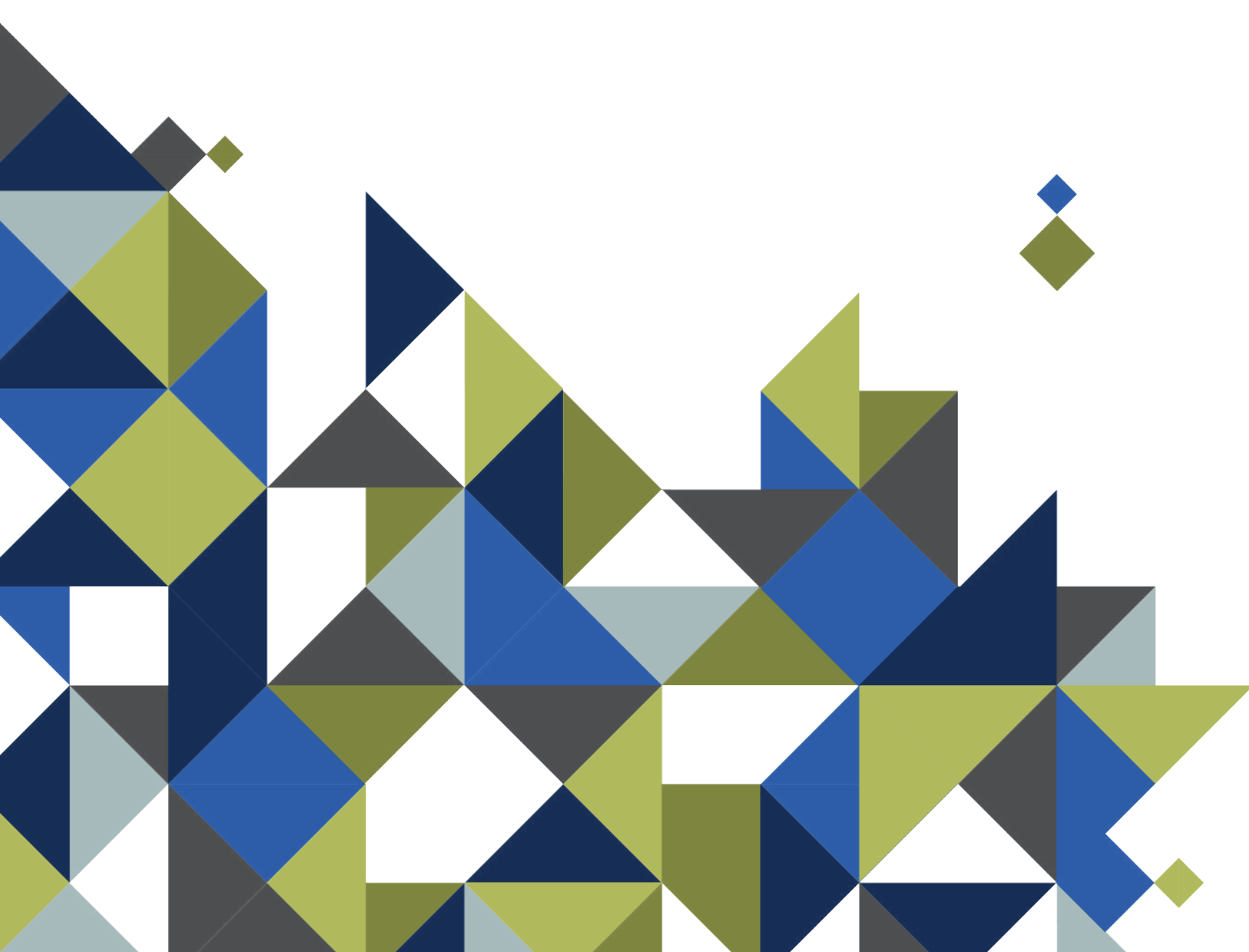


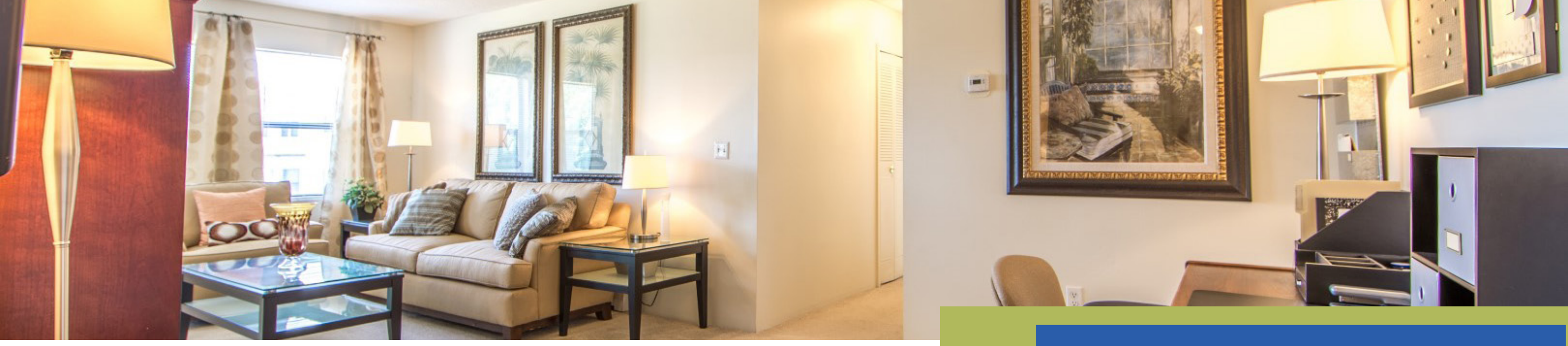
LIVE AT

# BOULDER PARK APARTMENTS

Situated just off of Somerset Parkway, Boulder Park Apartments in Nashua, NH is the ideal place to call home. Our 42-acre hilltop site offers stunning views of the Nashua countryside, which residents can enjoy while taking advantage of our many outdoor community amenities. Spend your summer days at our pool and playground, stay active in our fully equipped fitness center, and enjoy the convenience of on-site storage facilities. Located just 10 minutes from downtown Nashua and 15 minutes from Pheasant Lane Mall, Boulder Park has something for every resident lifestyle.

Nashua, NH, provides a vibrant lifestyle with excellent options for living, working, and playing. As the only city to be named Money Magazine's "Best Place to Live in America" twice, Nashua boasts some of the best dining, shopping, and recreational spots.



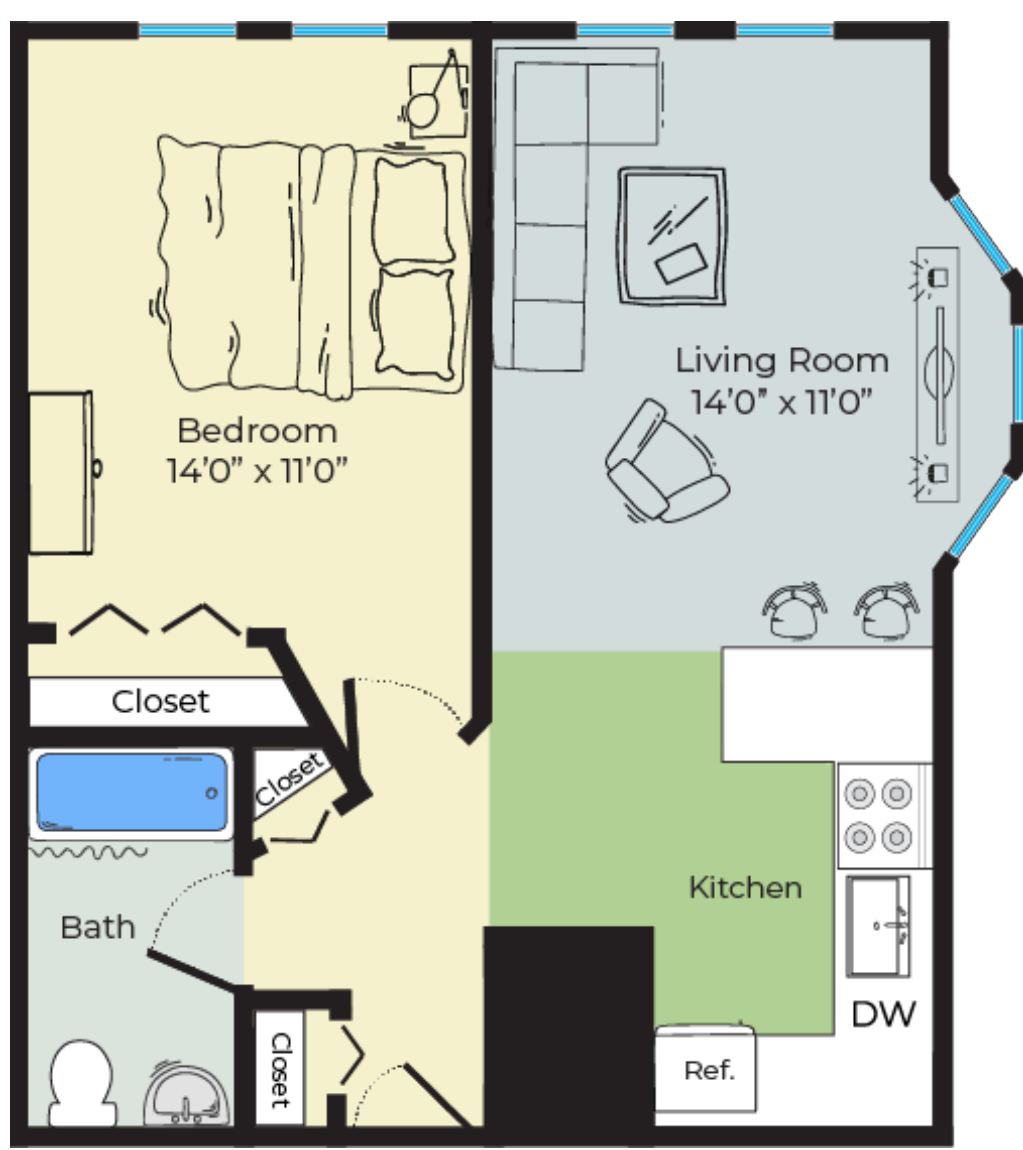


# FIND THE APARTMENT

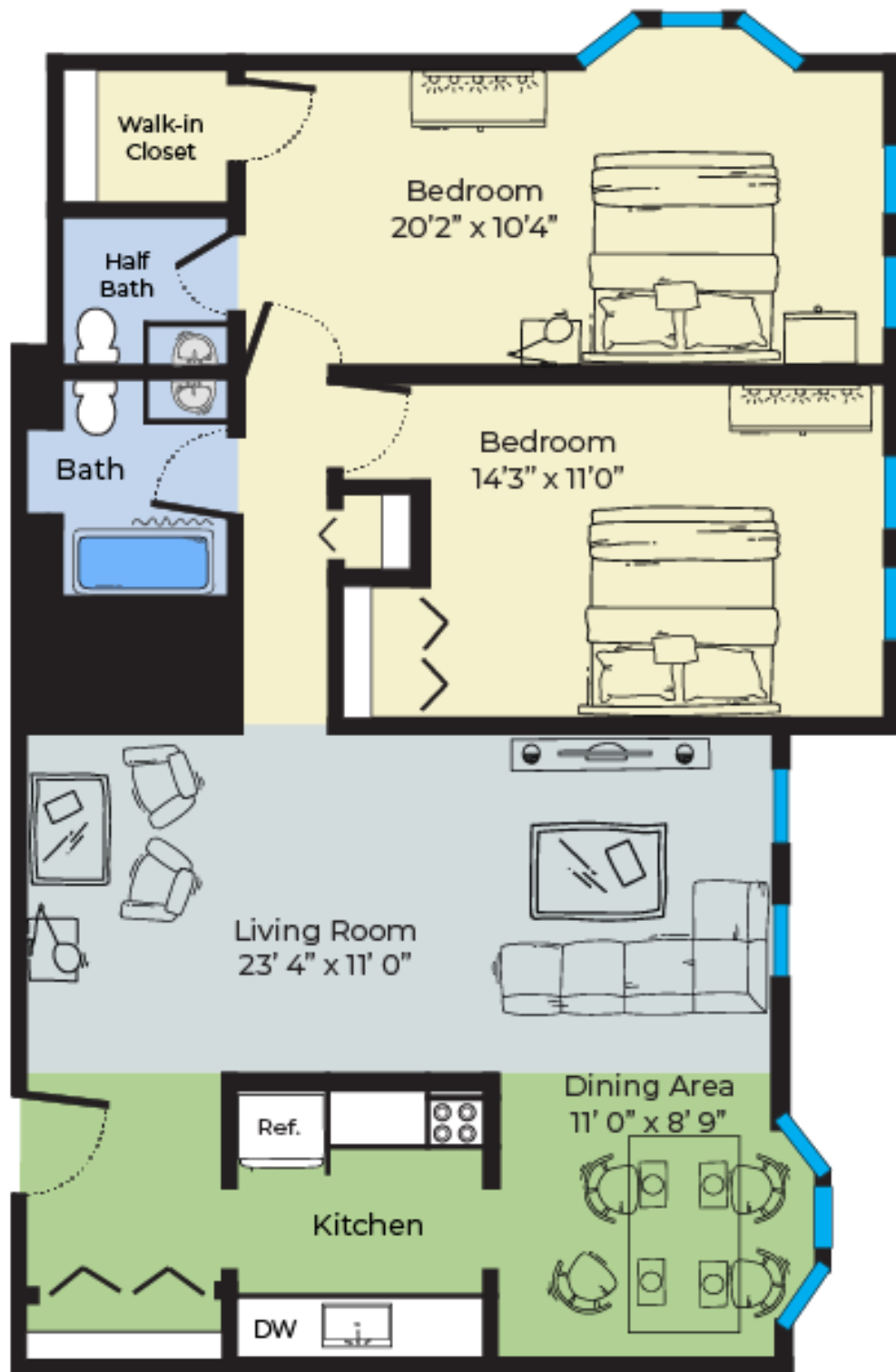
that suits your needs.

Within each residential building you will find laundry facilities not just in every building, but on every floor. Additionally, residents can enjoy delicious meals cooked in our fully equipped kitchens, a relaxing afternoon in one of our outdoor lounge areas, or quality time with your furry family member at our dog park. Our wide variety of floor plans offer something for everyone to ensure you are living in your ideal home.

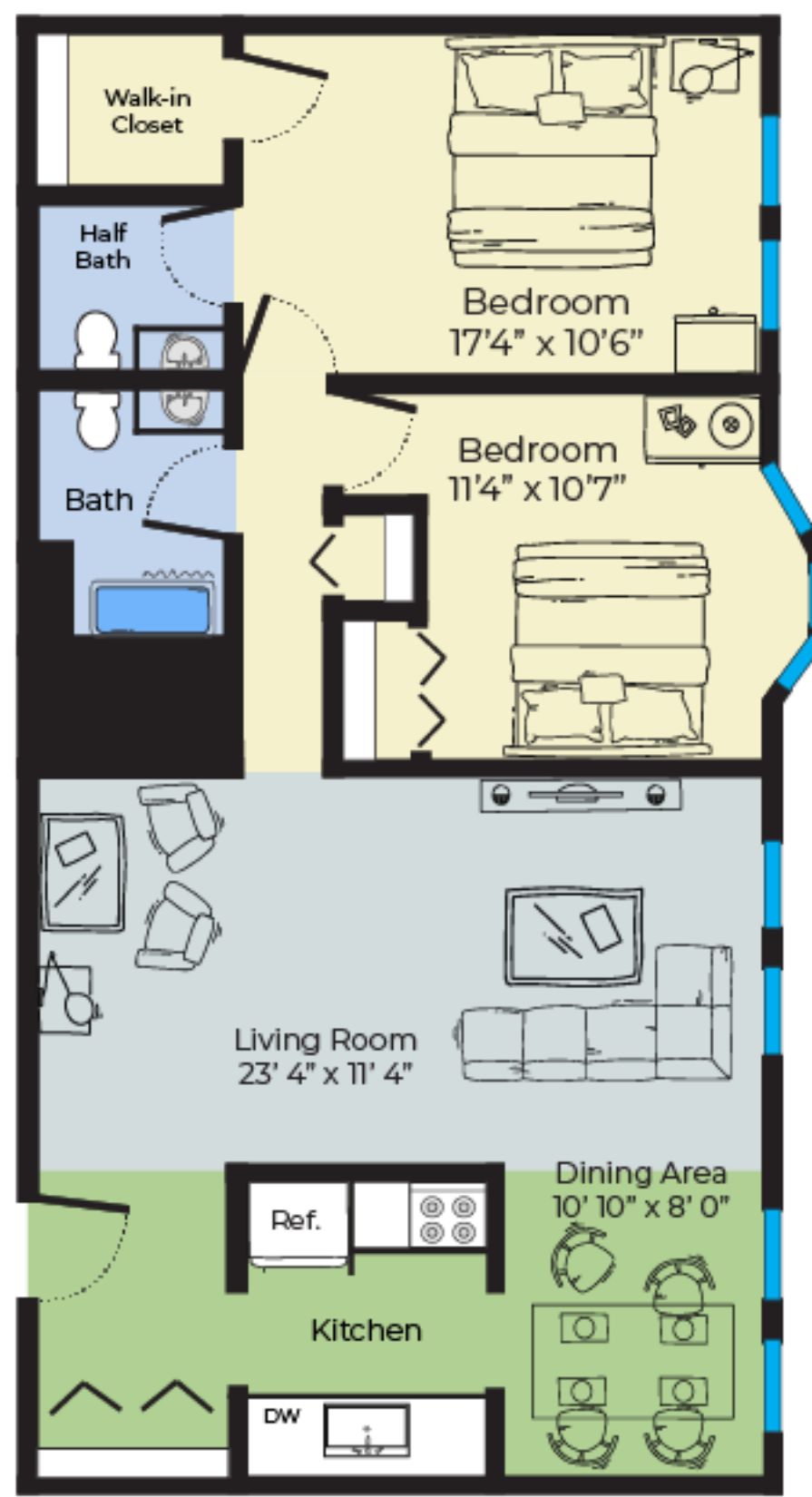
Residents can rest easy, knowing our dedicated teams of management and maintenance staff are here for you at Boulder Park Apartments. With 24/7 emergency maintenance, we're always here to help you resolve any issues quickly and conveniently.



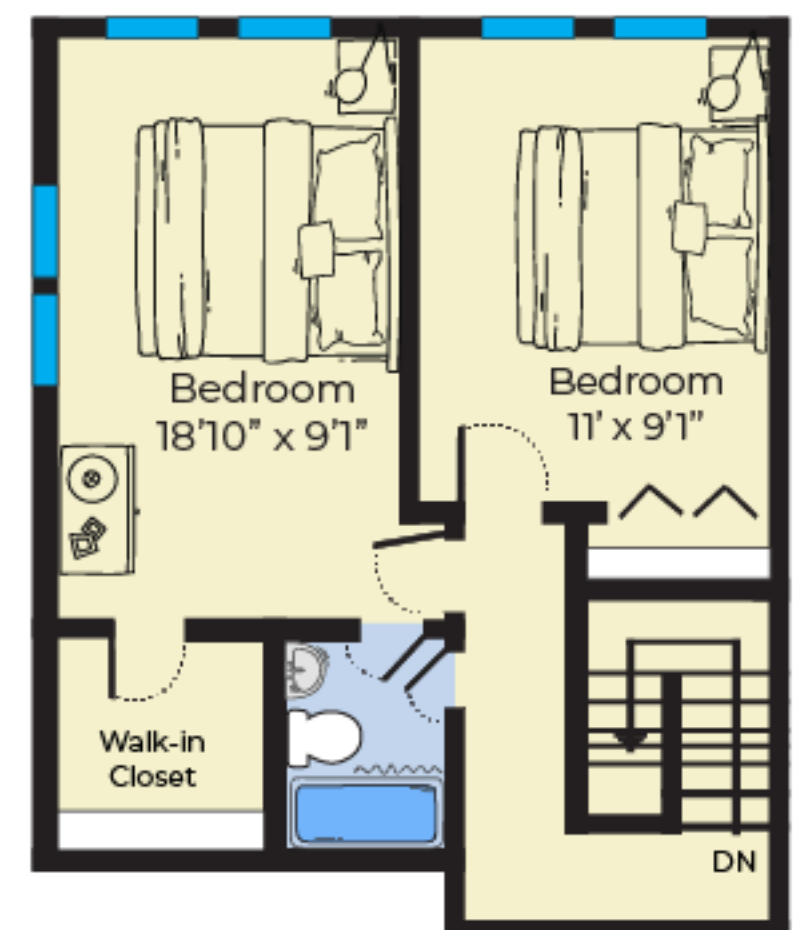
**1 Bed 1 Bath**  
570 Sq Ft



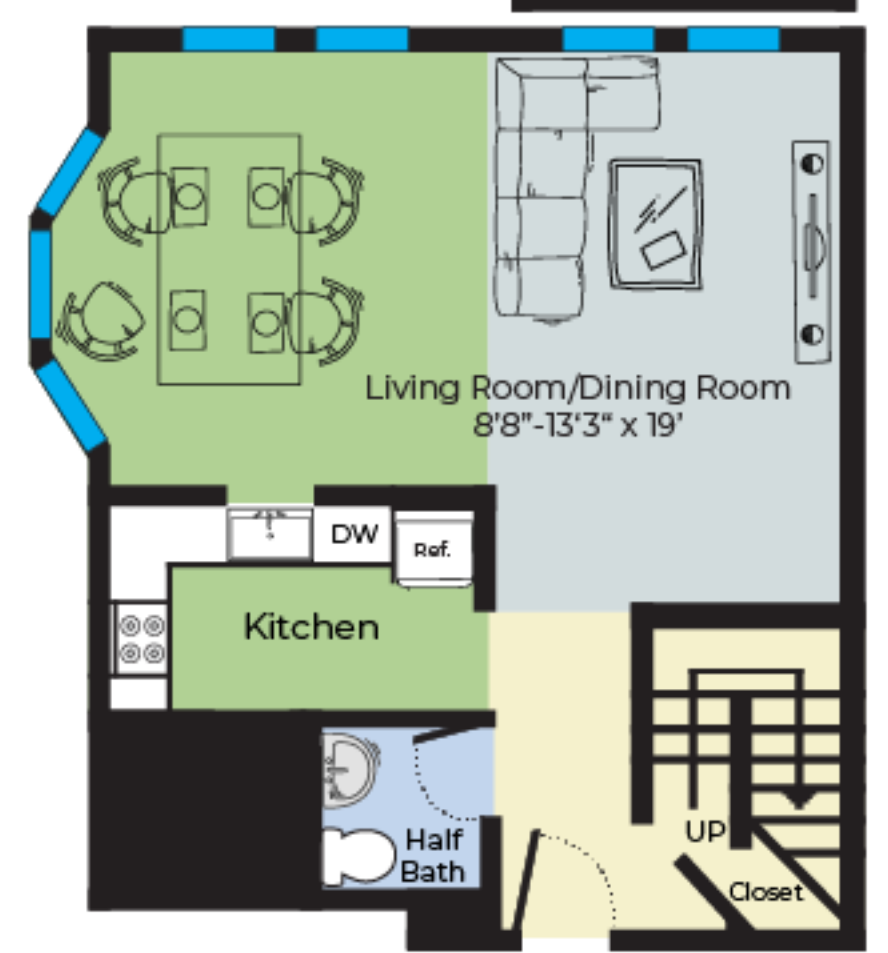
**2 Bed 1.5 Bath**  
1050 Sq Ft



**2 Bed 1.5 Bath**  
980 Sq Ft



**2 Bed 1.5 Bath**  
975-1200 Sq Ft





# YOUR APARTMENT

- ◇ Spacious and Flexible Layouts
- ◇ Walk-In Closets
- ◇ Gas Stove
- ◇ Dishwasher
- ◇ Individually Controlled Thermostats
- ◇ Air Conditioning
- ◇ Cable Ready
- ◇ Window Treatments
- ◇ Luxury Carpeting





# YOUR COMMUNITY

- ◇ Outdoor Swimming Pool
- ◇ Fitness Center
- ◇ Playground
- ◇ Tennis Court
- ◇ Winter Snow Removal
- ◇ Easy Highway Access
- ◇ Reservable Extra Storage
- ◇ Pickleball Court
- ◇ Laundry Facilities in Every Building on Every Floor
- ◇ Great Local School System
- ◇ Intercom System
- ◇ Pets Welcome (Breed Restrictions Apply)
- ◇ Outdoor Lounge Areas
- ◇ Community Grilling Area
- ◇ Outdoor Firepit
- ◇ Off-Street Parking
- ◇ Flexible Rent Payment with FLEX
- ◇ Virtual Tours Available
- ◇ Spectacular View
- ◇ 24 Hour Emergency Maintenance
- ◇ Online Rent Pay and Resident Services
- ◇ On-Site 24-Hour Professional Management
- ◇ Dog Park



[www.princetonproperties.com](http://www.princetonproperties.com)

