



NEWTON  
GARDENS

(857) 354-3403

newtongardens@princetonproperties.com

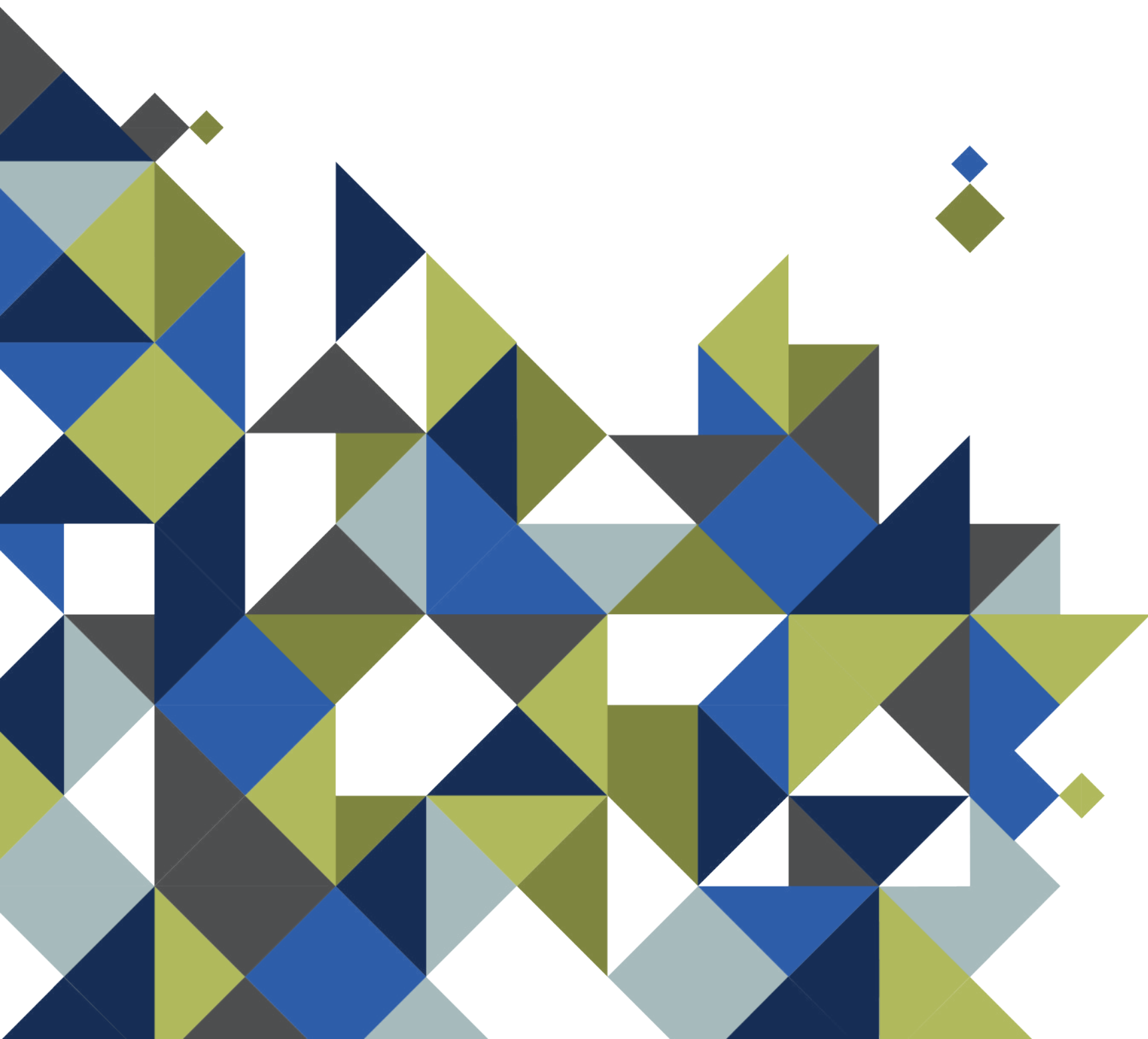


LIVE AT

# NEWTON GARDENS APARTMENTS

Newton, Massachusetts, known for its top-rated schools, lush parks, and vibrant community life, is a sought-after destination for families and professionals alike. Located just outside of Boston, and in close proximity to I-95 and Route 9, Newton offers a balance of urban accessibility and suburban peace.

Newton Gardens Apartments combine the historical charm of Newton with modern amenities, providing residents with a comfortable and convenient living experience. Newton Gardens is ideal for those seeking a blend of thoughtful design and practicality in one of Massachusetts's most sought-after towns.





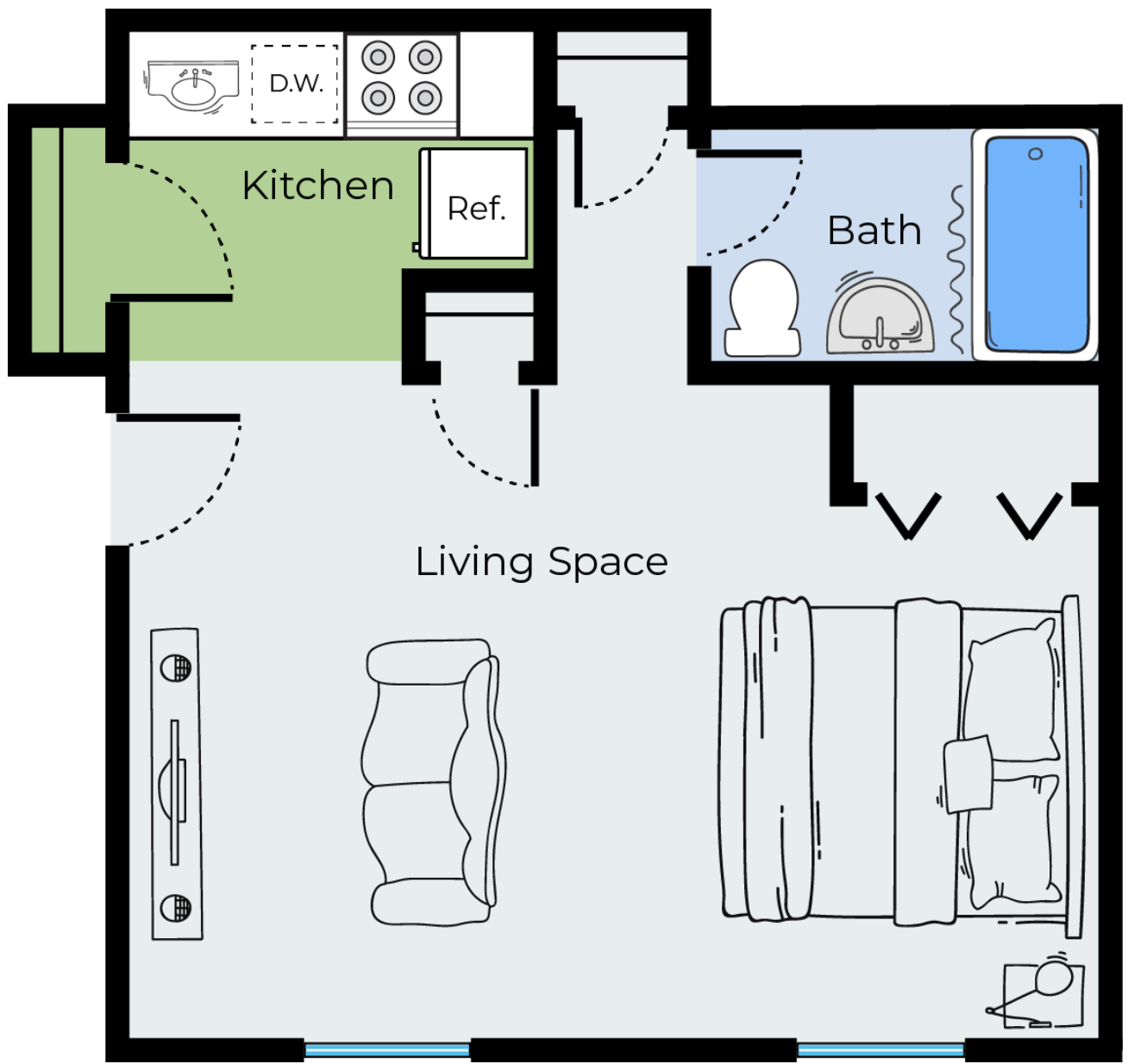


# FIND THE APARTMENT

that suits your needs.

The apartments at Newton Gardens are designed to provide a feeling of being home. Residents enjoy fully equipped kitchens, flexible living areas, and minimalist design that are perfect for you to add your personal touch. Each offers modern amenities within the timeless charm of Newton, making Newton Gardens Apartments a place you can be proud to call home.

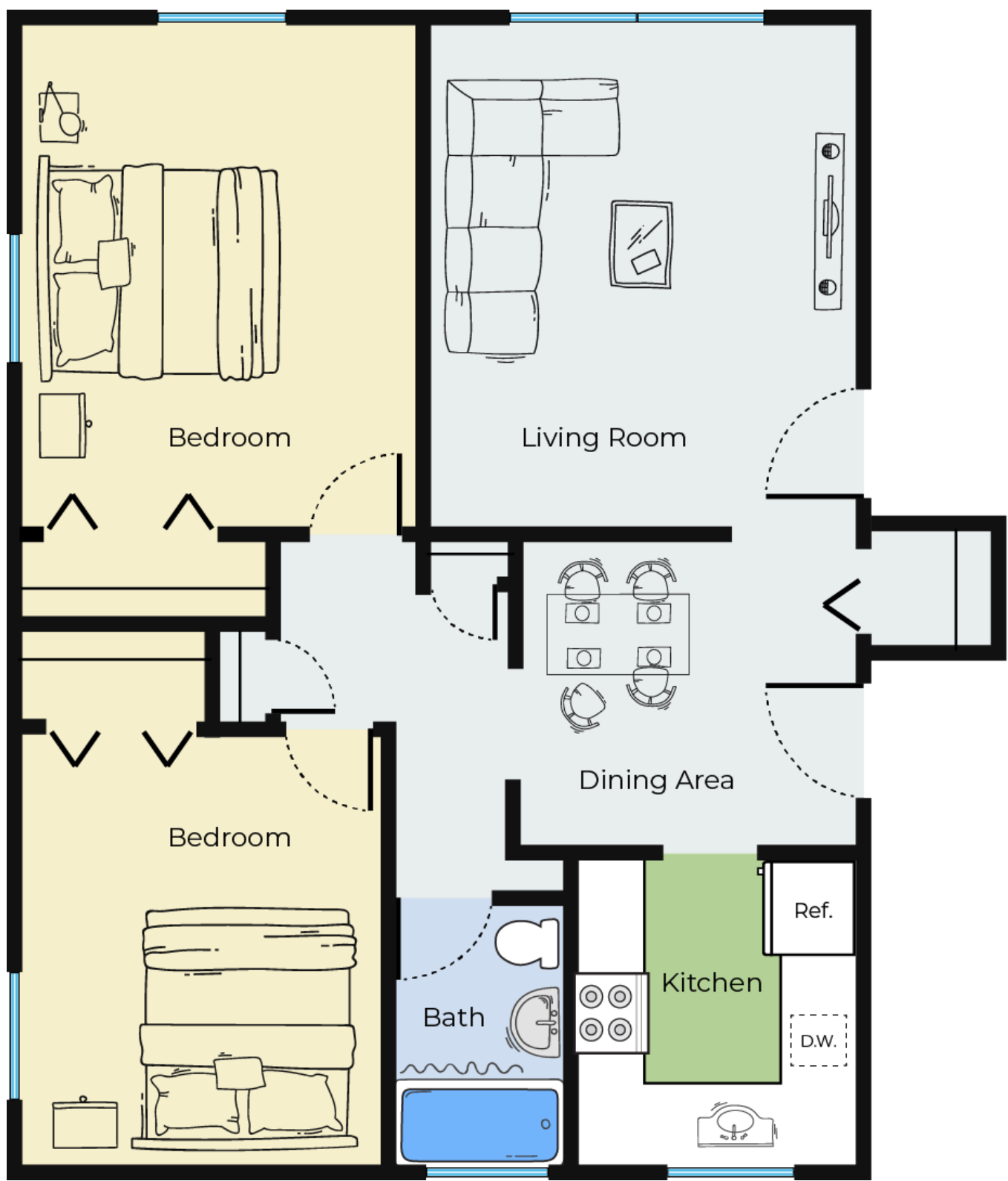
When you're ready to move into your new Newton Gardens home, Princeton will be there to streamline your moving process with our Living Made Simple process. Once settled in, residents can rest easy knowing our dedicated teams of management and maintenance staff are here for you, at Newton Gardens. With 24/7 emergency maintenance, we're always here to help you resolve any issues quickly, and conveniently.



**Studio 1 Bath**  
646 - 657 Sq Ft



**1 Bed 1 Bath**  
768 - 795 Sq Ft



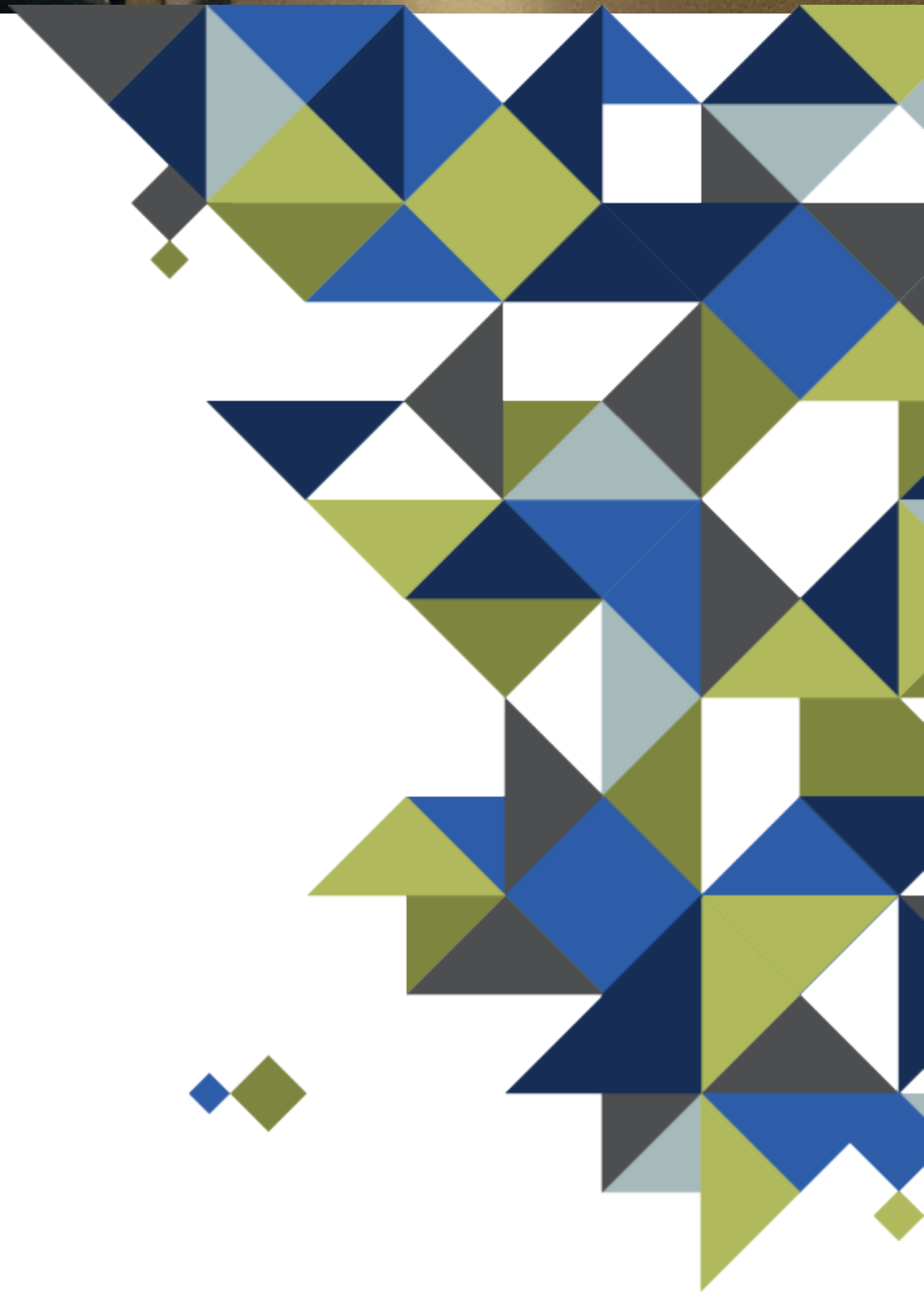
**1 Bed 1 Bath**  
768 - 795 Sq Ft





# YOUR APARTMENT

- ◇ Cable and High Speed Internet Ready
- ◇ Flexible Layouts
- ◇ Stainless Steel Appliances in Select Units
- ◇ Ample Closet Space
- ◇ Premium Carpeting in Bedrooms
- ◇ Dishwasher







# YOUR COMMUNITY

- ◇ Laundry Facilities
- ◇ Pets Welcome (Some Breed Restrictions Apply)
- ◇ Additional Off-Street Parking Available to Rent
- ◇ On-Site Professional Management Team
- ◇ 24/7 On-Site Maintenance
- ◇ Online Rent Pay and Other Resident Services
- ◇ Smoke-Free Living
- ◇ Controlled Access
- ◇ Package Concierge



[www.princetonproperties.com](http://www.princetonproperties.com)

