



THE JAMES
APARTMENTS



(978) 201-3953



thejames@princetonproperties.com

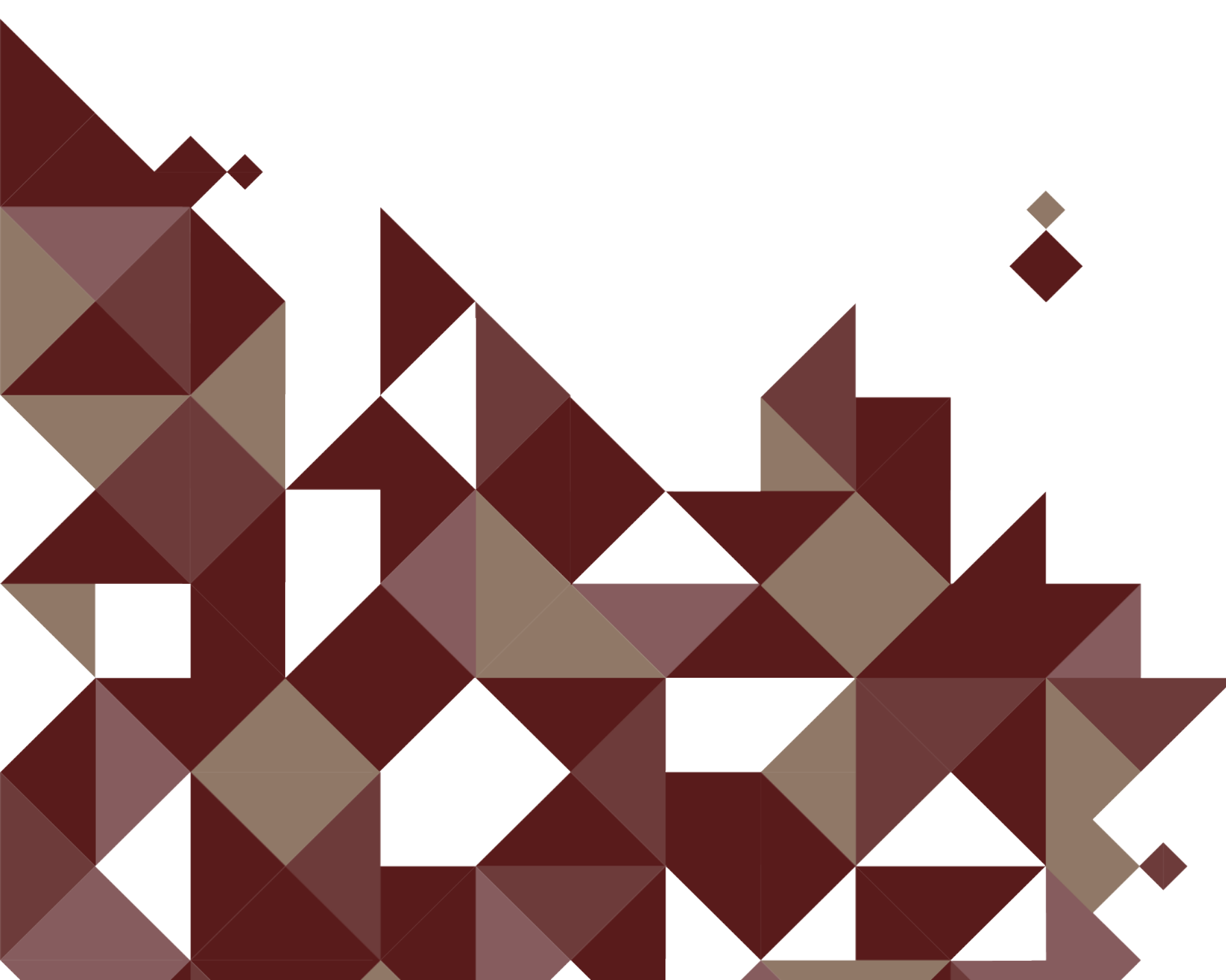
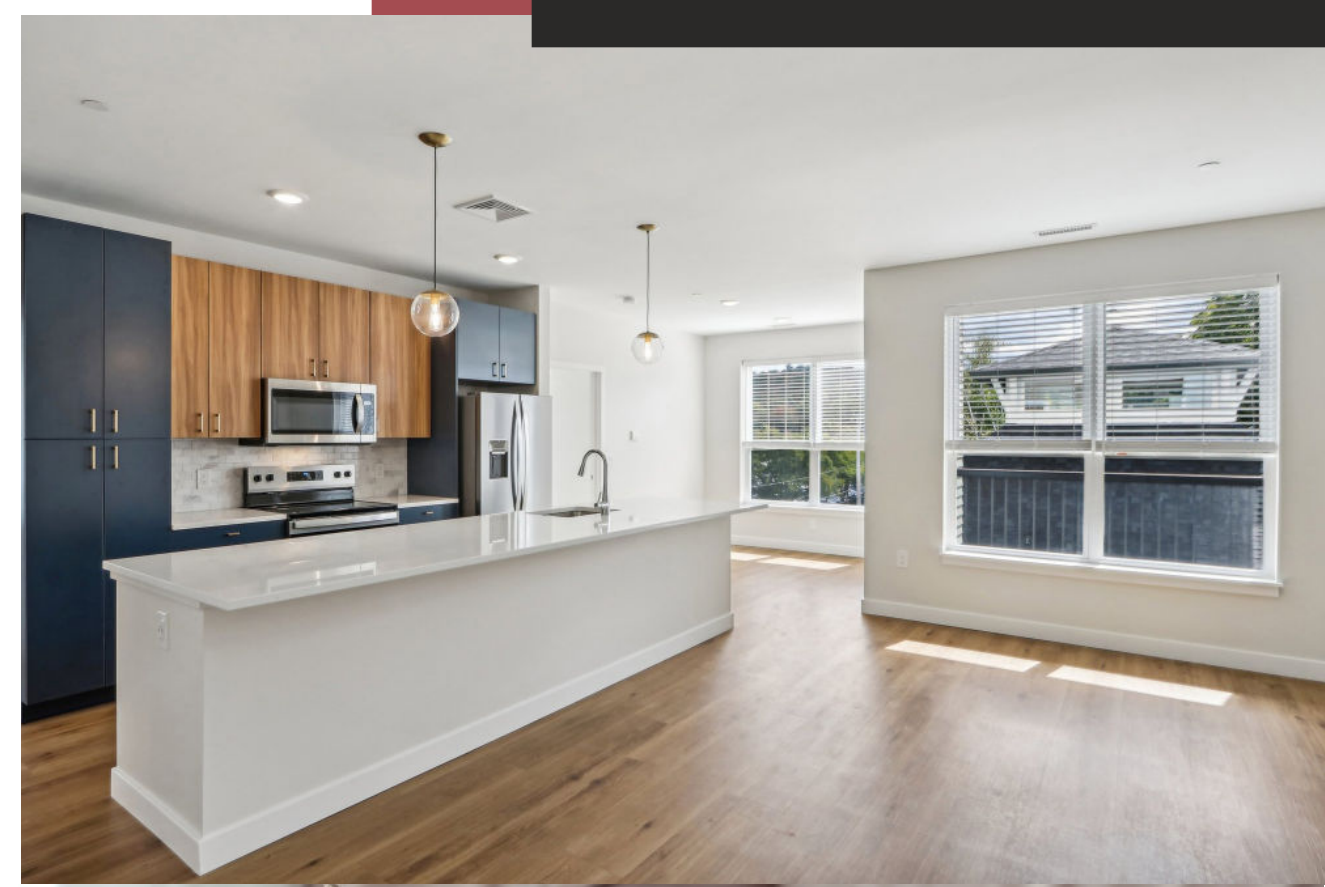


LIVE AT

THE JAMES APARTMENTS

Inspired by Princeton's principle to "do the right things, not just do things right," The James is set to redefine luxury apartment living in the historic Bradford neighborhood of Haverhill, MA, opening Summer 2024.

This community offers four residential buildings with one and two-bedroom floorplans, complemented by a range of amenities including a clubhouse with work-from-home spaces, pet spa, two parking garages, EV charging stations, and an outdoor grilling area. The James stands out as Princeton Properties' most technologically advanced community, featuring smart-home innovations like keyless access, package concierge, and touch screen intercom controls for a seamless living experience.



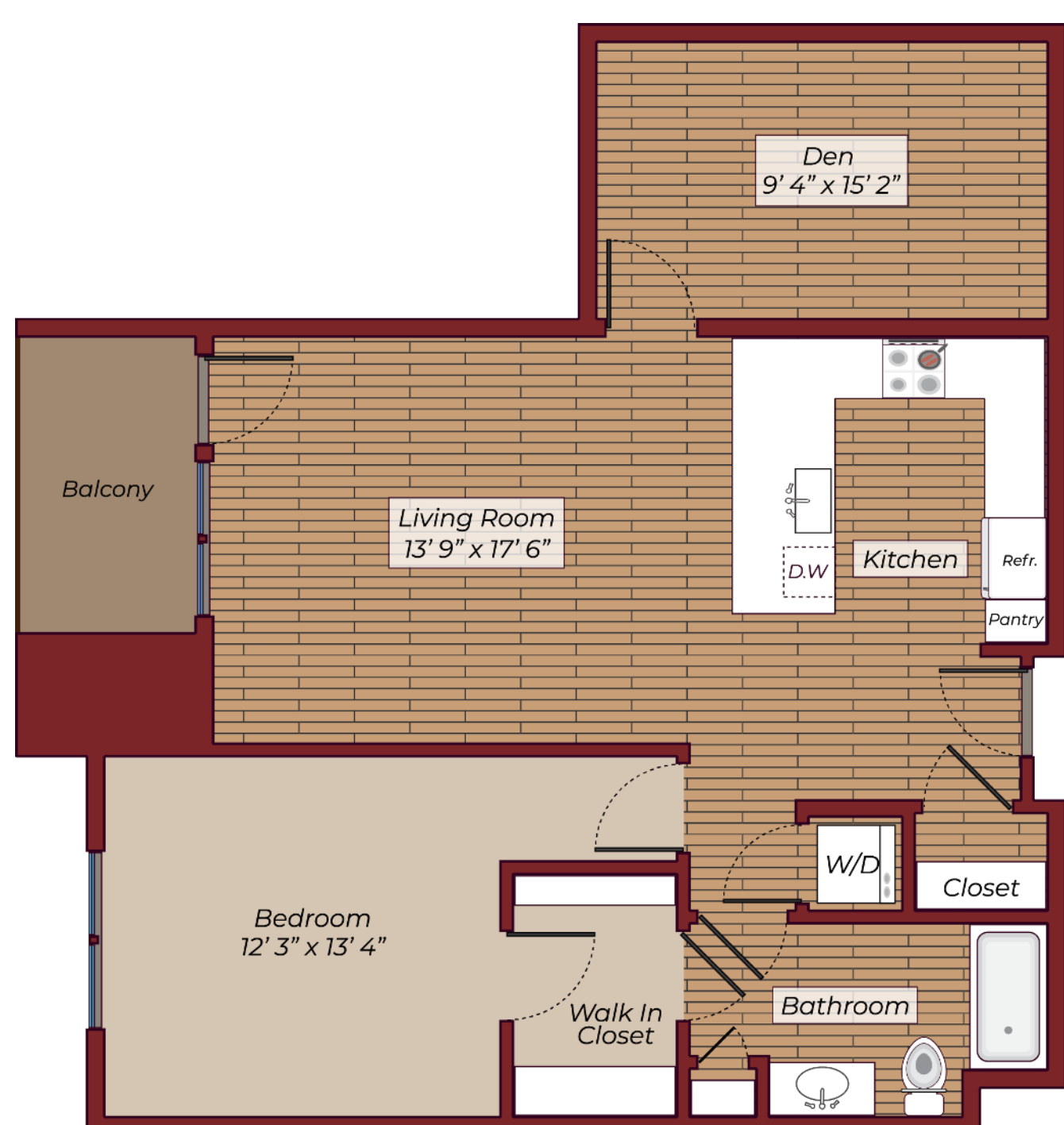


FIND THE APARTMENT

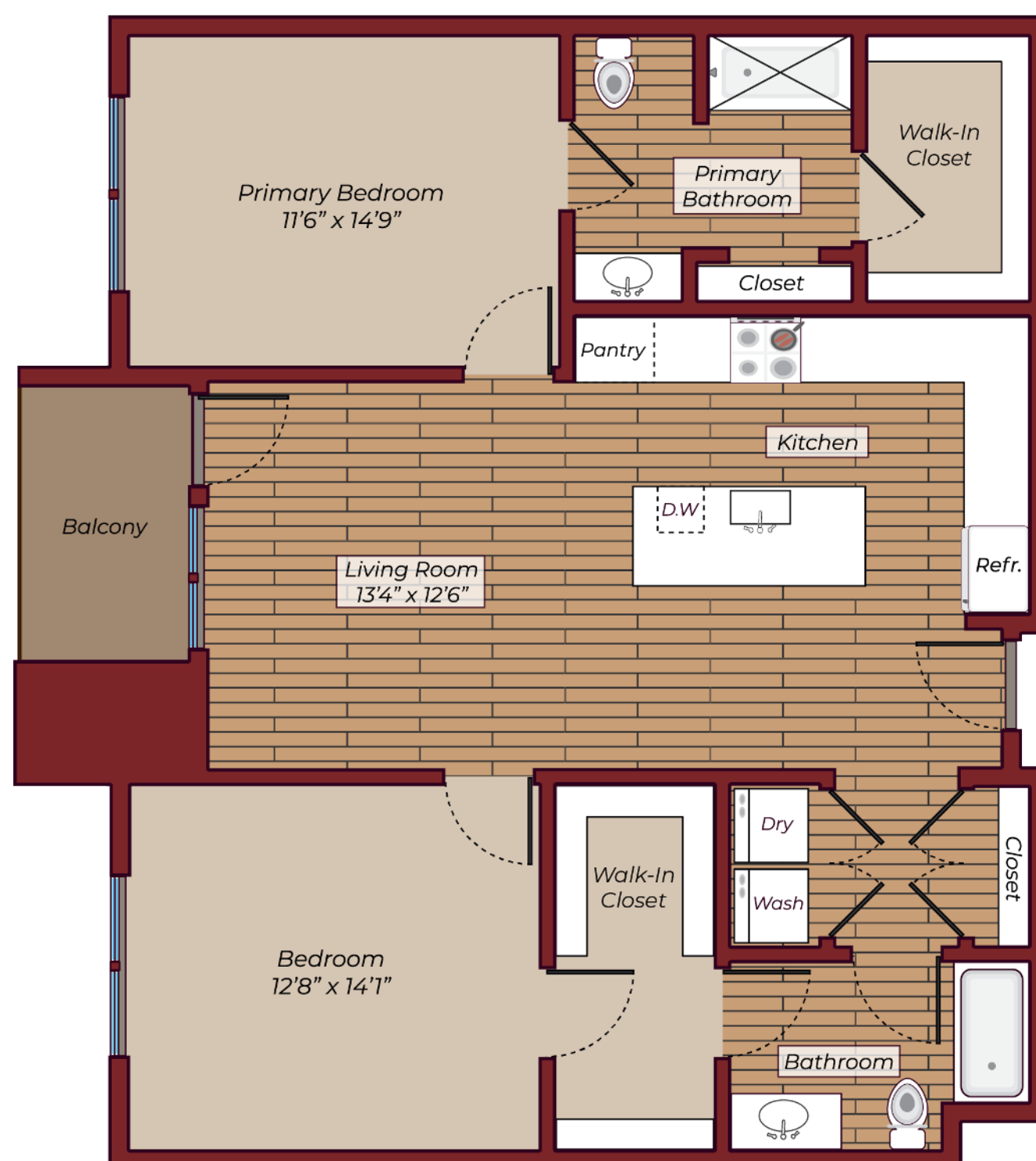
that suits your needs.

Inside each apartment, enjoy modern comforts such as central air, smart home controls, full-sized washer/dryers, and stainless steel kitchen appliances. French door refrigerators, quartz countertops, and custom cabinetry add sophistication, while large windows and 9' ceilings create a bright, open atmosphere. Enjoy your mornings on your balcony or patio, or let your furry friend bask in the sunlight.

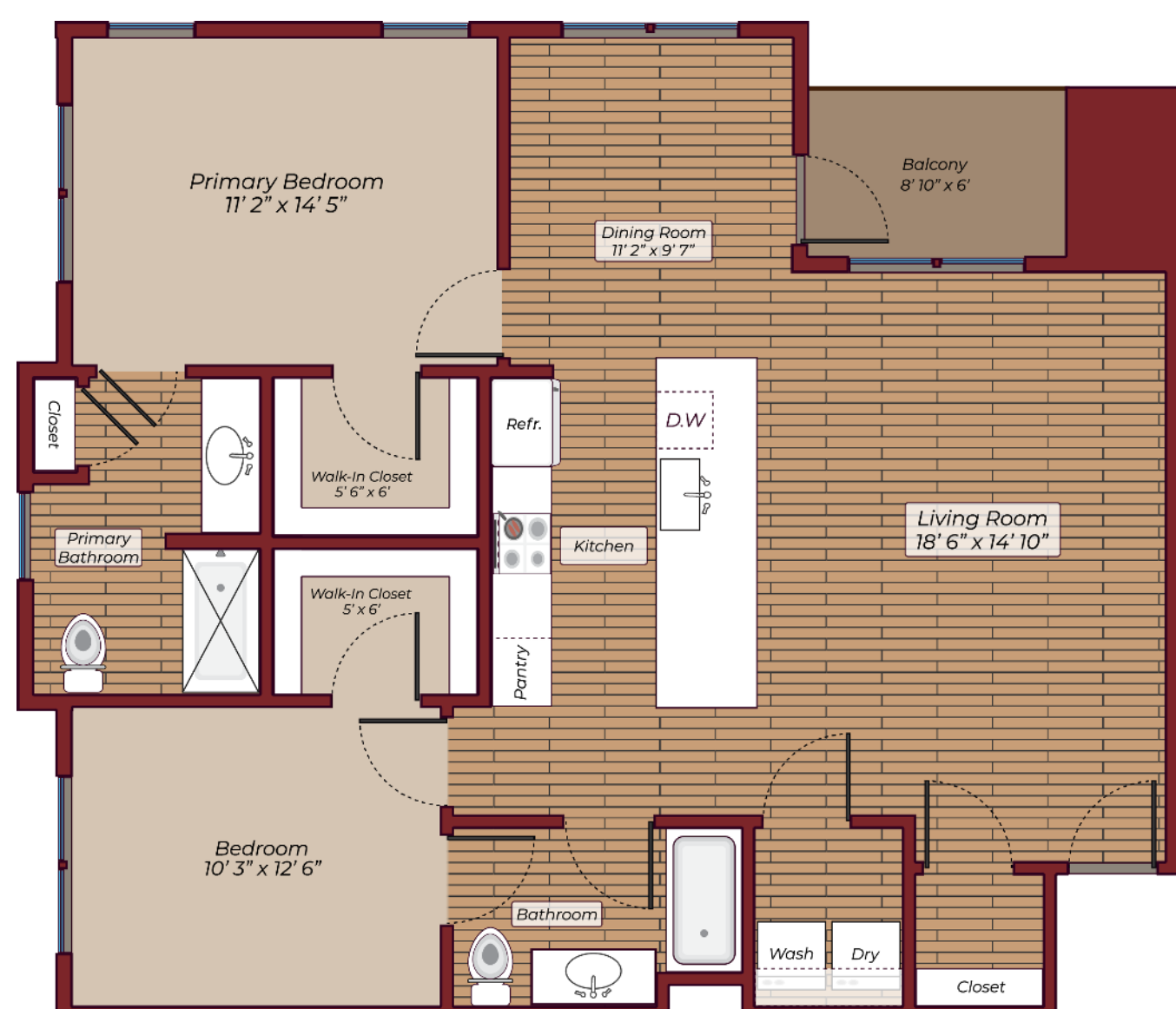
As with all Princeton Properties communities, The James offers 24/7 emergency maintenance and a dedicated team to ensure your living experience is nothing short of exceptional.



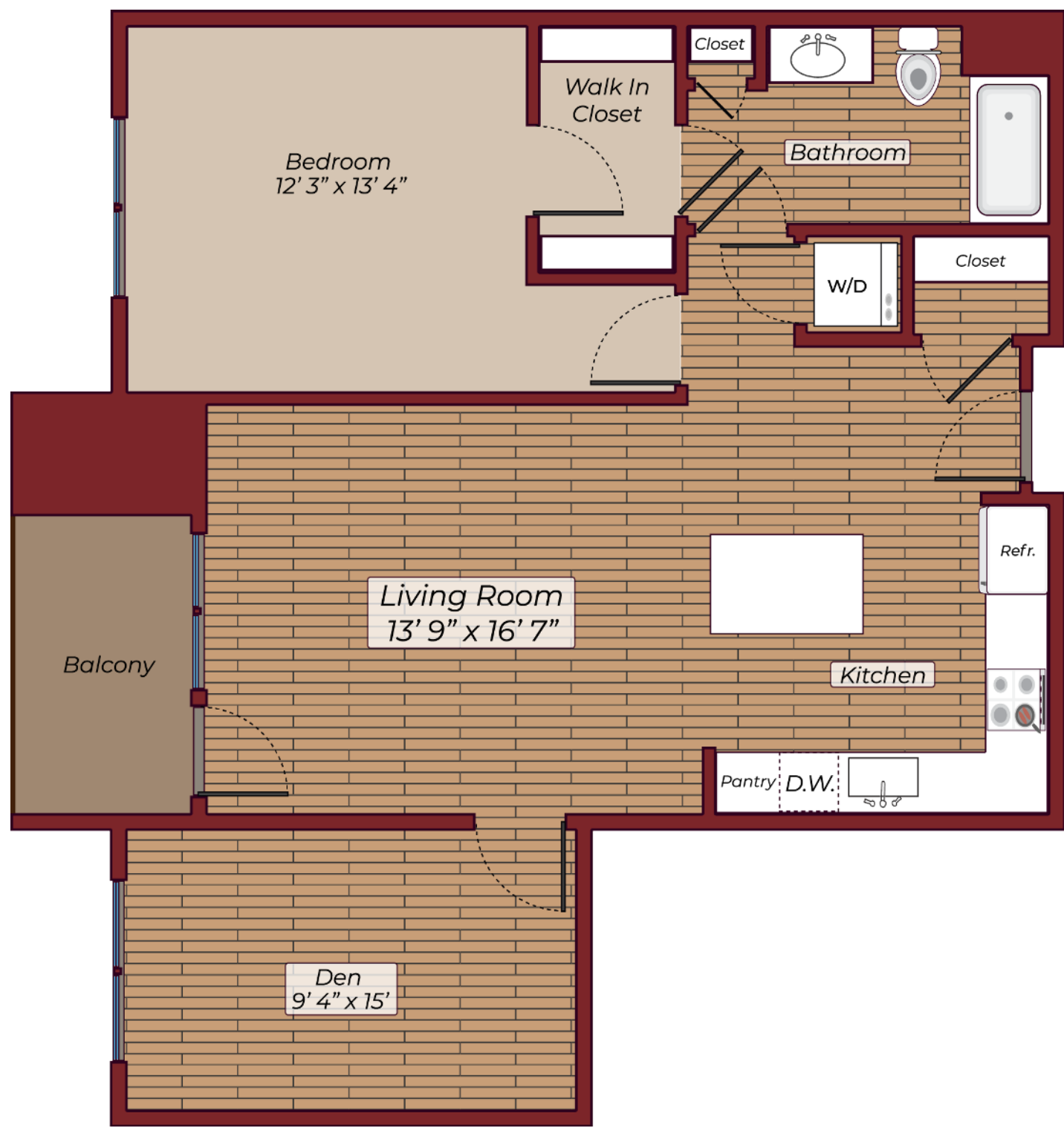
1 Bed 1 Bath
930 Sq Ft



2 Bed 2 Bath
1136 Sq Ft

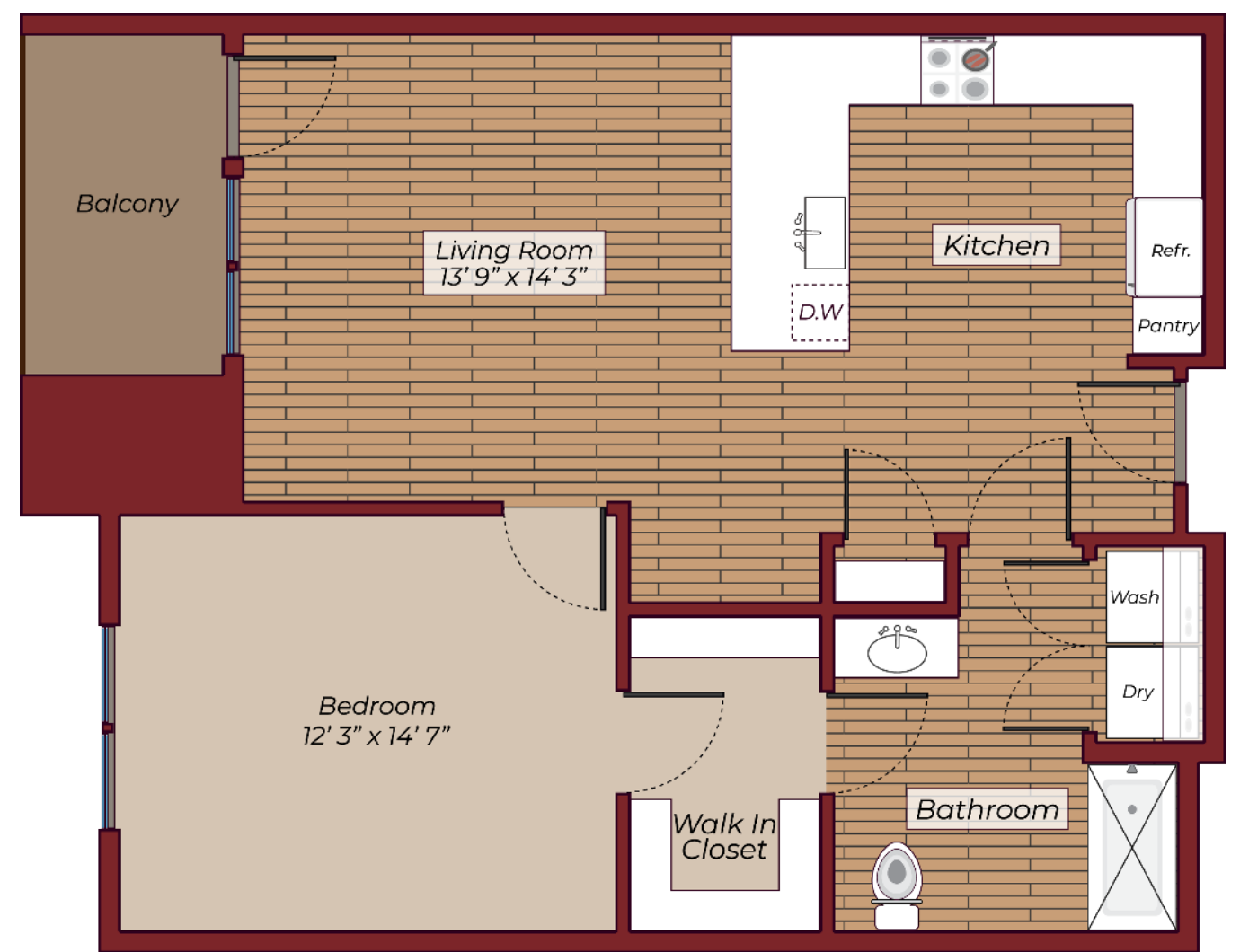


2 Bed 2 Bath
1113 Sq Ft

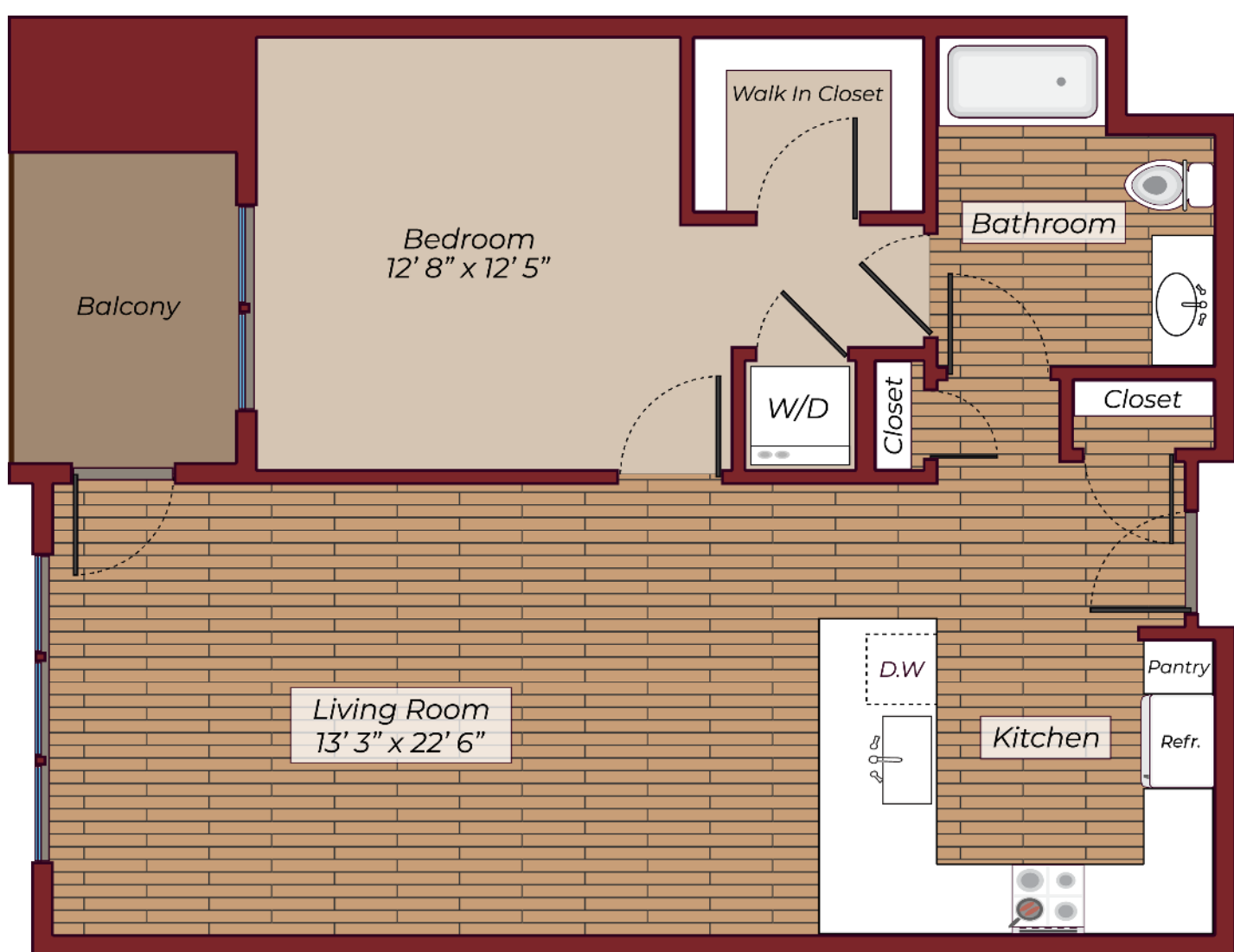


1 Bed 1 Bath
913 Sq Ft

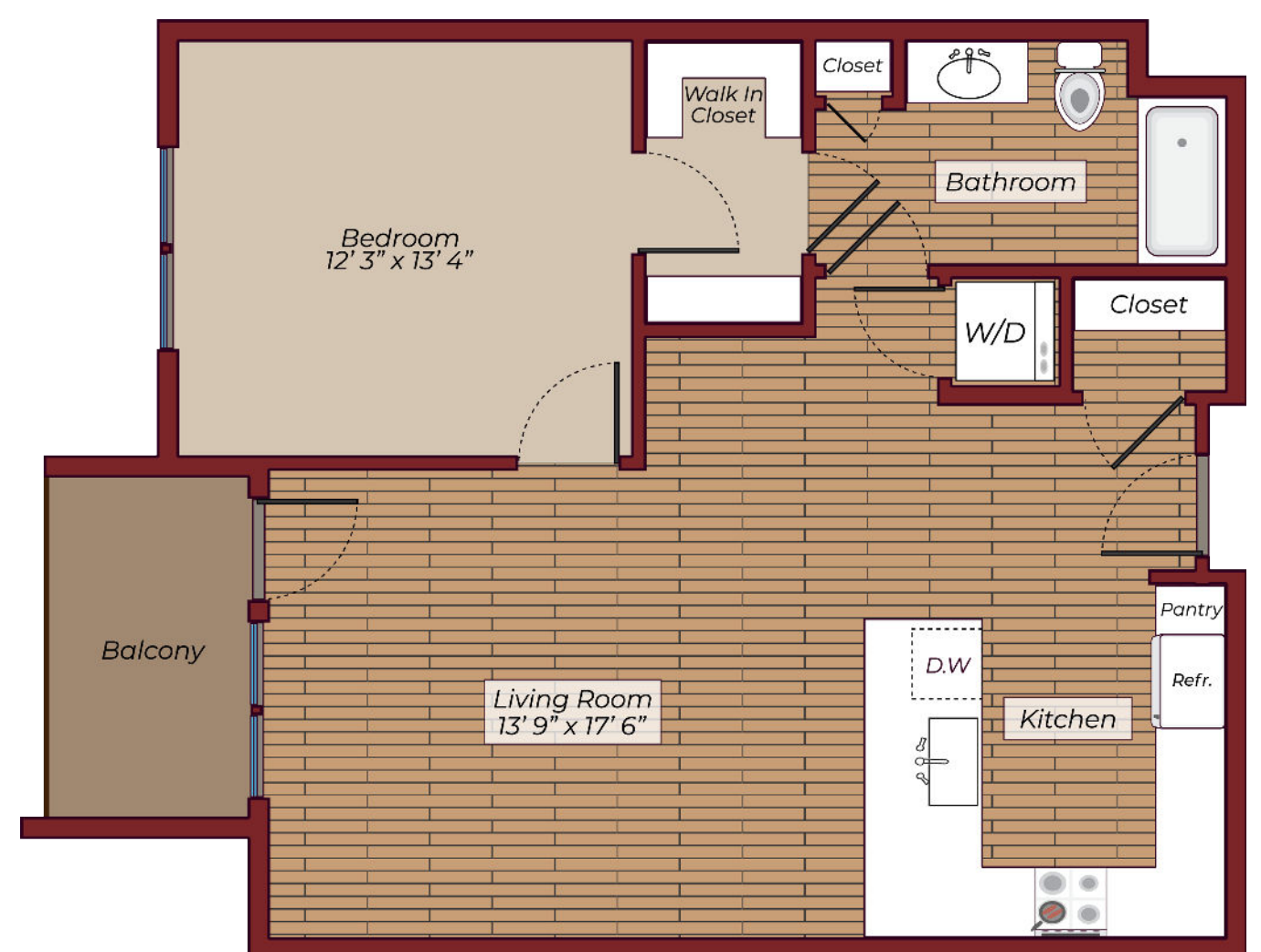
**BUILT
FOR**
how you
live.



1 Bed 1 Bath
777 Sq Ft



1 Bed 1 Bath
808 Sq Ft



1 Bed 1 Bath
776 Sq Ft



YOUR APARTMENT

- ◇ Vaulted Ceiling
- ◇ Smart Home Technology
- ◇ Faux Wood Blinds
- ◇ Touch Screen Intercom Panel
- ◇ Premium Carpeting in Bedrooms
- ◇ Luxury Plank Flooring
- ◇ Window Treatments
- ◇ Quartz Countertops
- ◇ Stainless steel appliances
- ◇ Walk-In Closets
- ◇ Microwave
- ◇ Kitchen Islands with Breakfast Bars
- ◇ One Bedroom Apartment Homes with Den
- ◇ ADT Home Security
- ◇ Dishwasher
- ◇ 9 ft. ceilings
- ◇ Custom Two-Toned Kitchen Cabinetry
- ◇ Balconies and Patios
- ◇ Keyless Apartment Entry
- ◇ Full Sized Washer/Dryer
- ◇ French Door Refrigerator with Water Dispenser
- ◇ Marble Tile Kitchen Backsplash





YOUR COMMUNITY

- ◇ Outdoor Grilling Area
- ◇ Limited Access Building
- ◇ Package Rooms with Smart Access in Each Building
- ◇ Patios
- ◇ Off-street parking
- ◇ Elevators
- ◇ Pet Spa
- ◇ Smoke free community
- ◇ One and two bedroom apartment homes
- ◇ Clubhouse
- ◇ Bicycle Storage
- ◇ 24/7 Emergency Maintenance
- ◇ Carbon-Neutral Powered Living
- ◇ Pets Allowed
- ◇ Pool
- ◇ High-speed cable Internet access
- ◇ Keyless Building Entry
- ◇ Garage Parking Available
- ◇ EV Charging Stations
- ◇ Fitness Center
- ◇ On Site Maintenance
- ◇ On Site Management
- ◇ Outdoor Firepit
- ◇ Outdoor Community Patio
- ◇ Online Payments Available



www.princetonproperties.com

