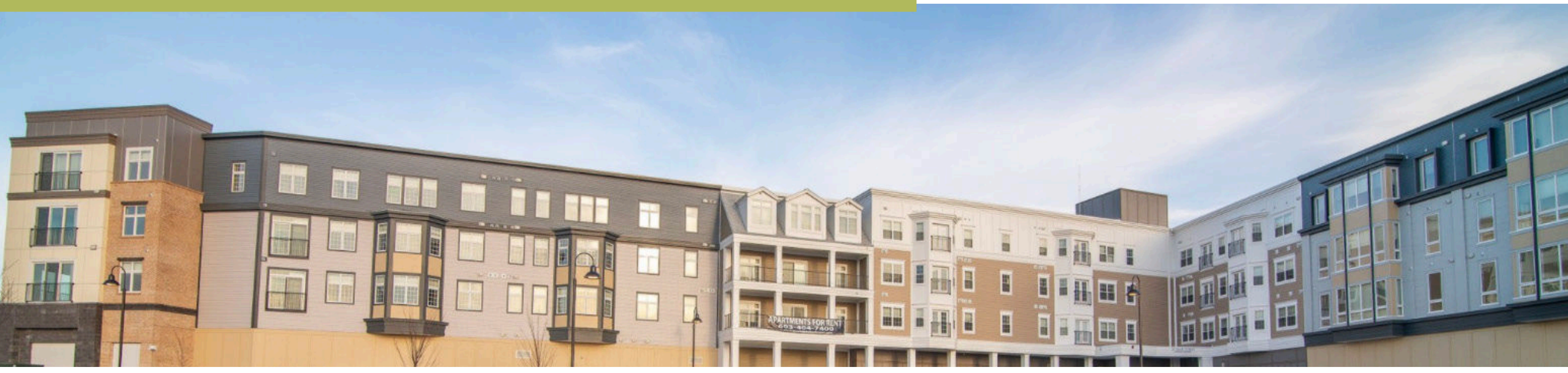




WOODMONT COMMONS
APARTMENTS

(603) 912-8043

woodmont@princetonproperties.com

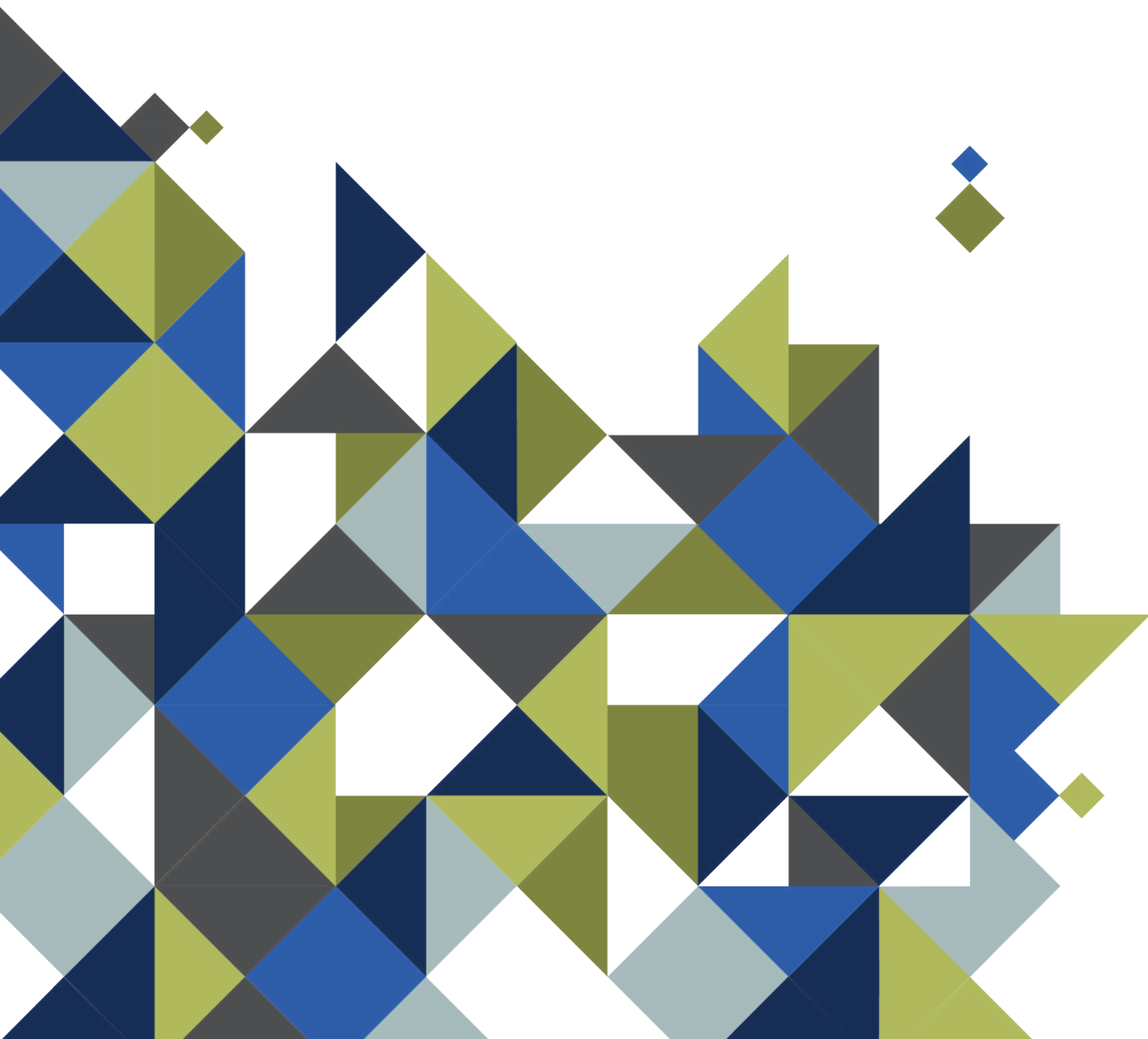
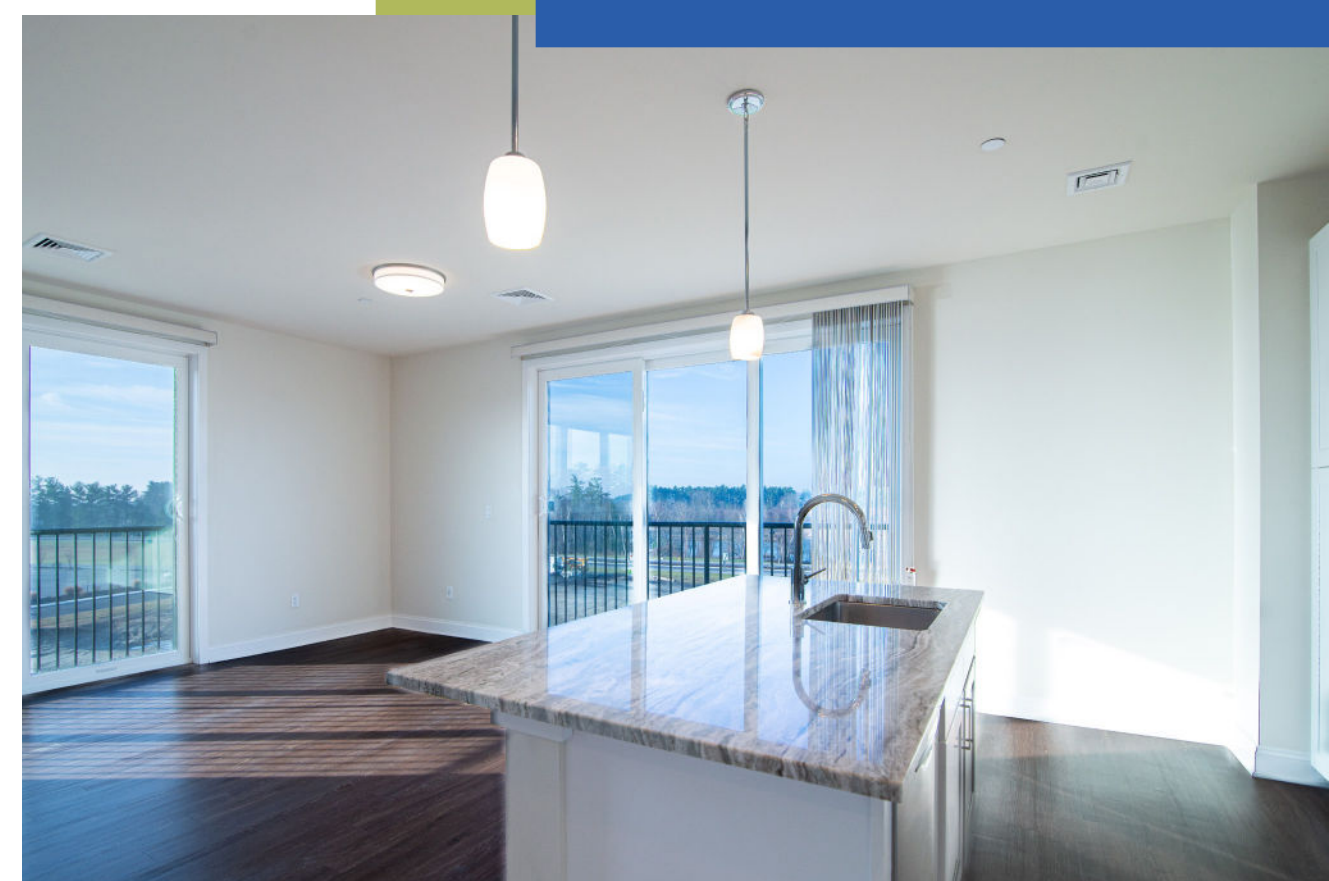


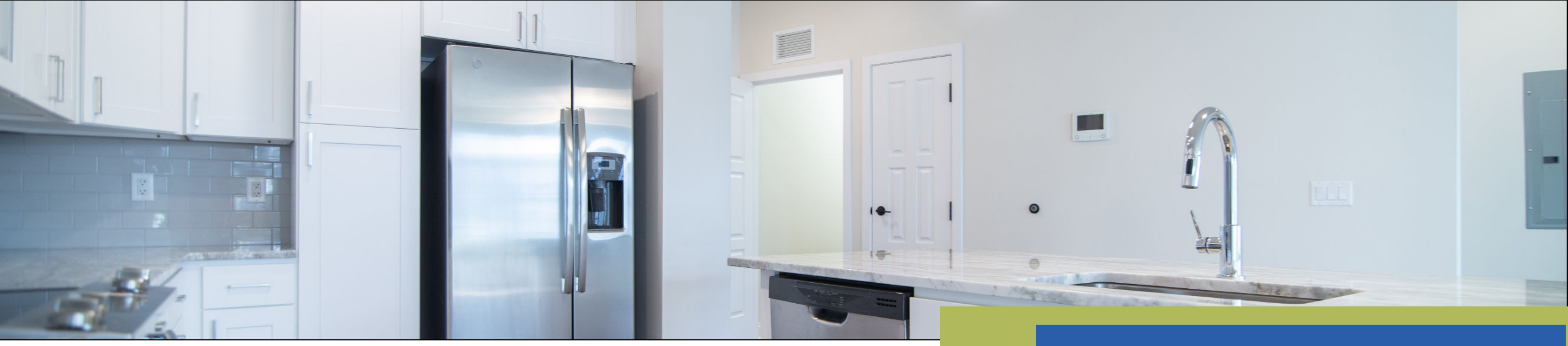
LIVE AT

WOODMONT COMMONS APARTMENTS

Londonderry, New Hampshire, known for its picturesque landscapes and charming small-town feel, offers a peaceful retreat from the hustle and bustle of city life. This town combines rural beauty with modern convenience. Close to Boston and Manchester, Londonderry caters to commuters seeking a rural home.

Woodmont Commons Apartments in Londonderry reflect modern elegance and convenience. Set against New Hampshire's natural beauty, this community offers an upscale living experience with a touch of rustic charm. Woodmont Commons is ideal for those who value contemporary design and amenities in a serene setting.



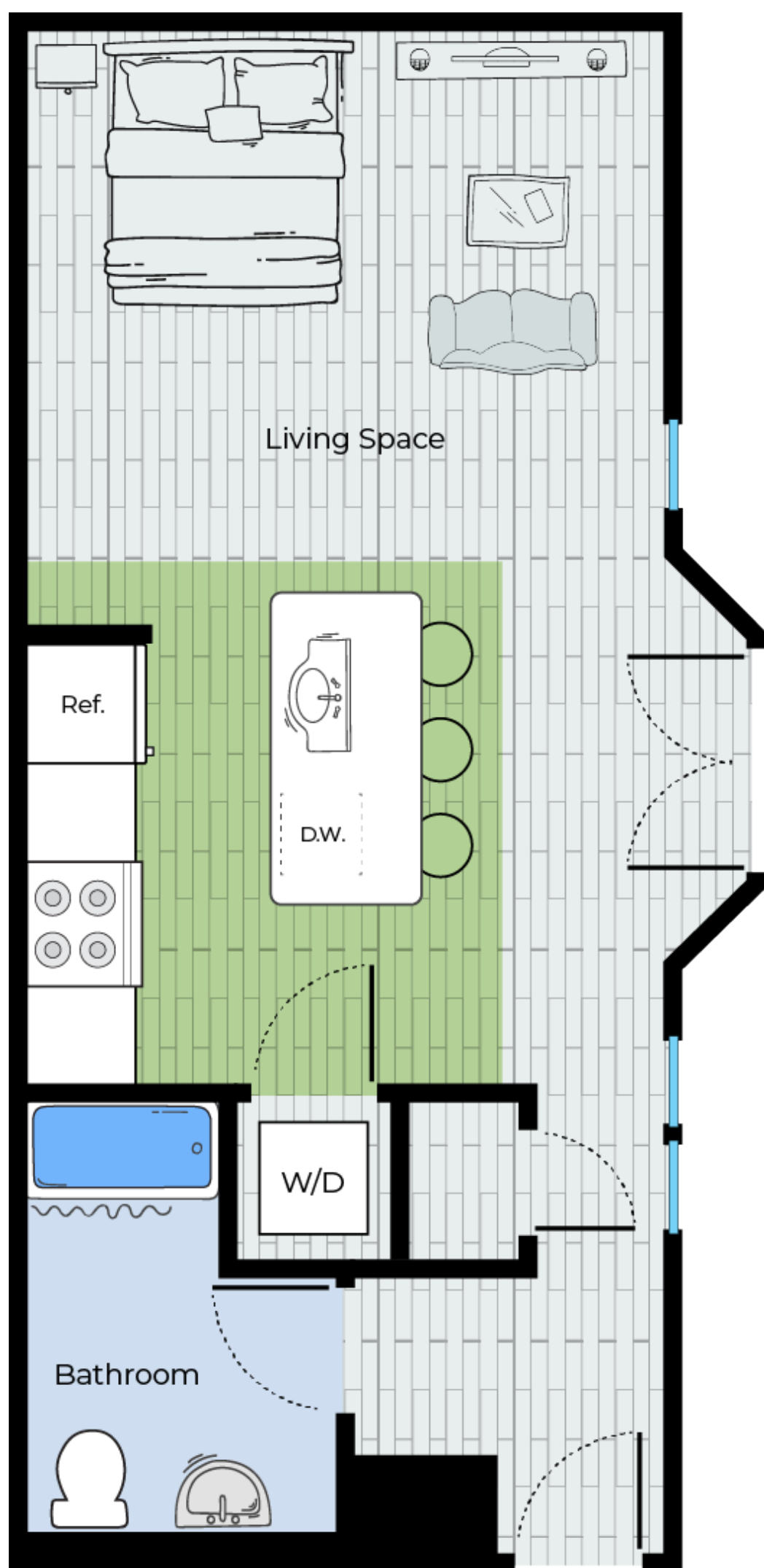


FIND THE APARTMENT

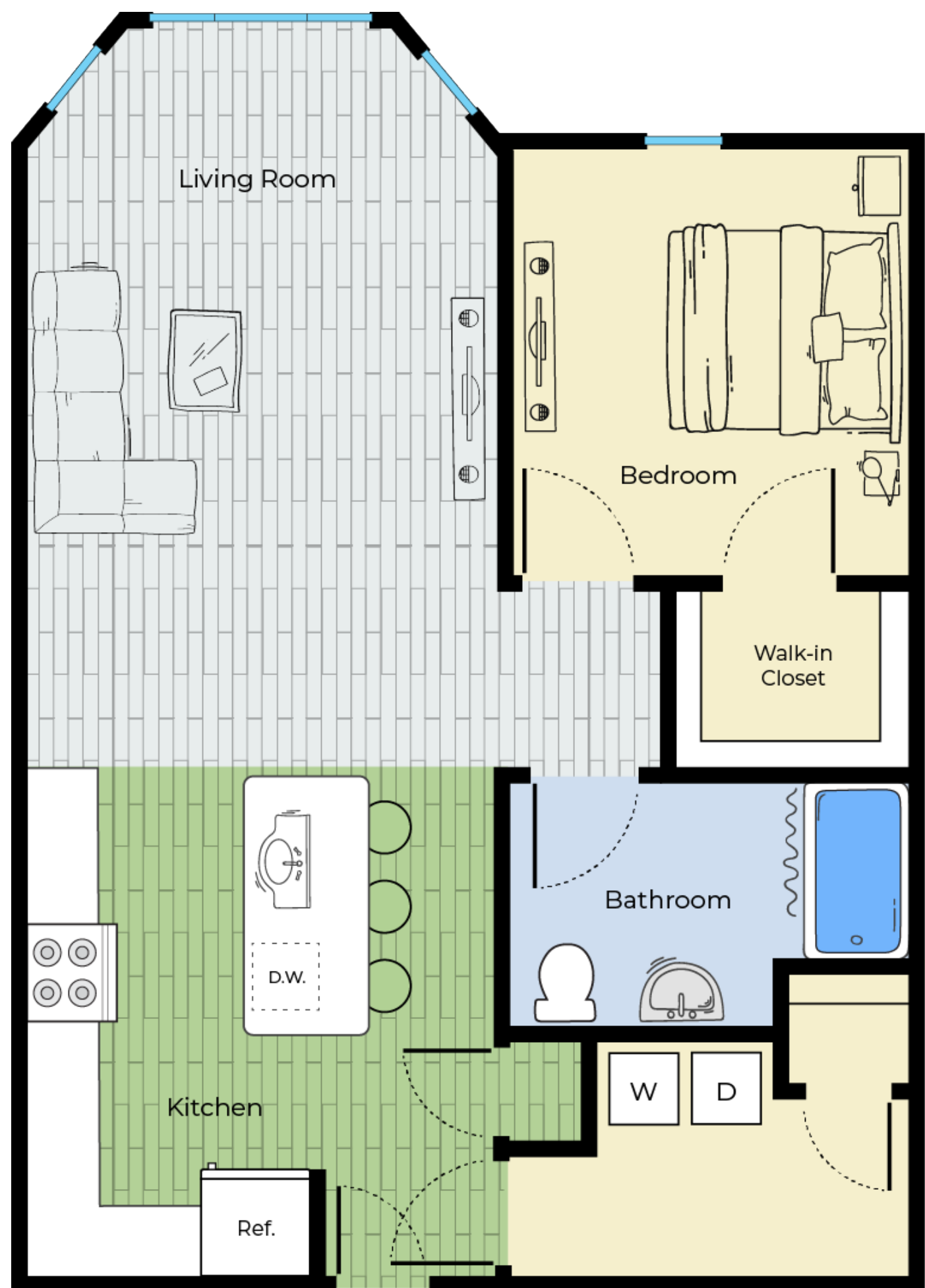
that suits your needs.

Residents enjoy luxurious in-unit amenities that cater to a sophisticated lifestyle. The apartments feature modern kitchens, spacious floor plans, and high-end finishes. Attention to detail ensures true comfort and style in Londonderry.

When you're ready to move into your new Woodmont Commons home, Princeton will streamline your moving process with our Living Made Simple approach. Once settled in, residents can rest easy knowing our dedicated management and maintenance teams are here for you. With 24/7 emergency maintenance, we're always available to resolve any issues quickly and conveniently.



Studio 1 Bath
646 - 657 Sq Ft

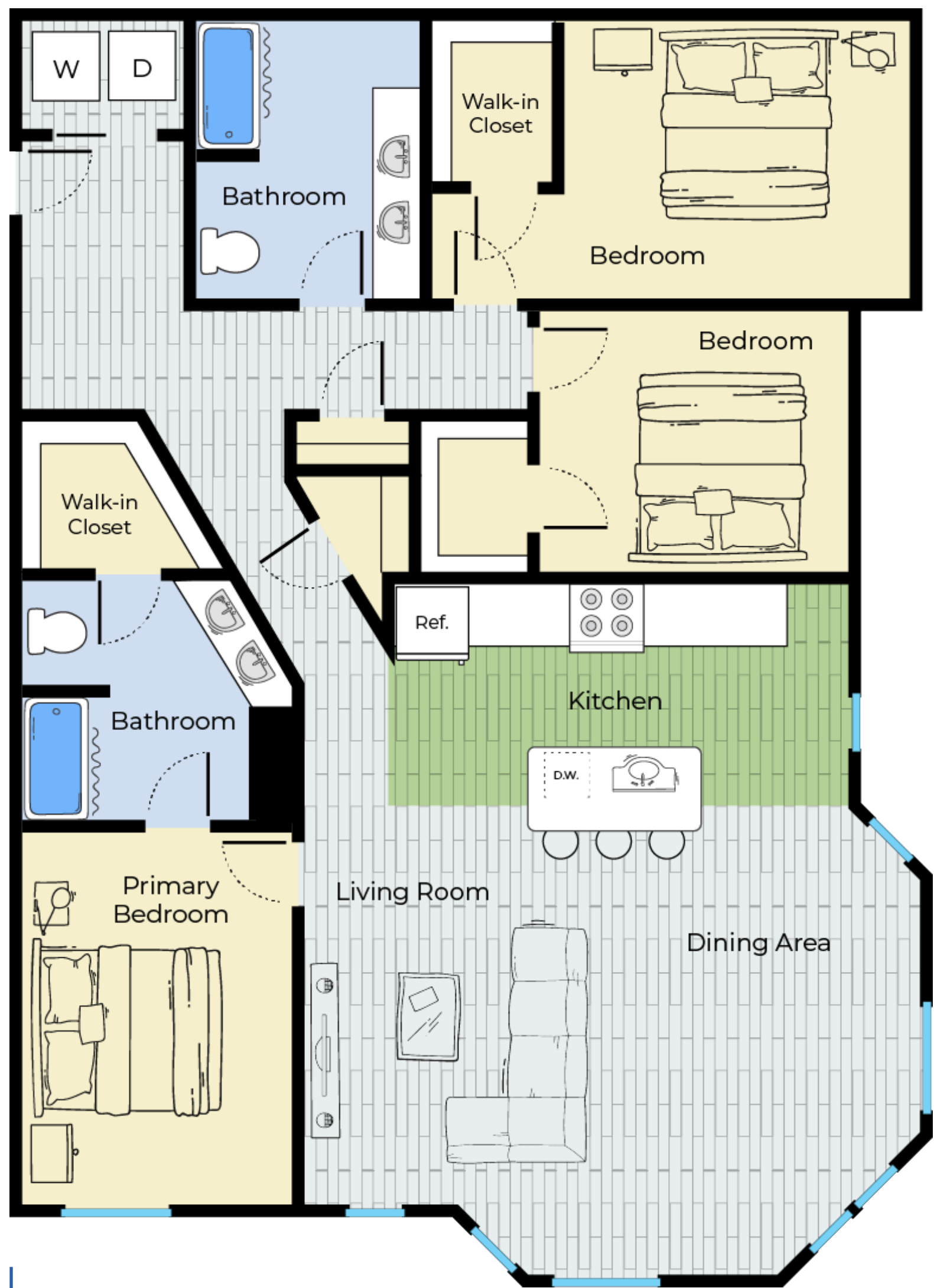


1 Bed 1 Bath
768 - 795 Sq Ft



FIND THE PLACE

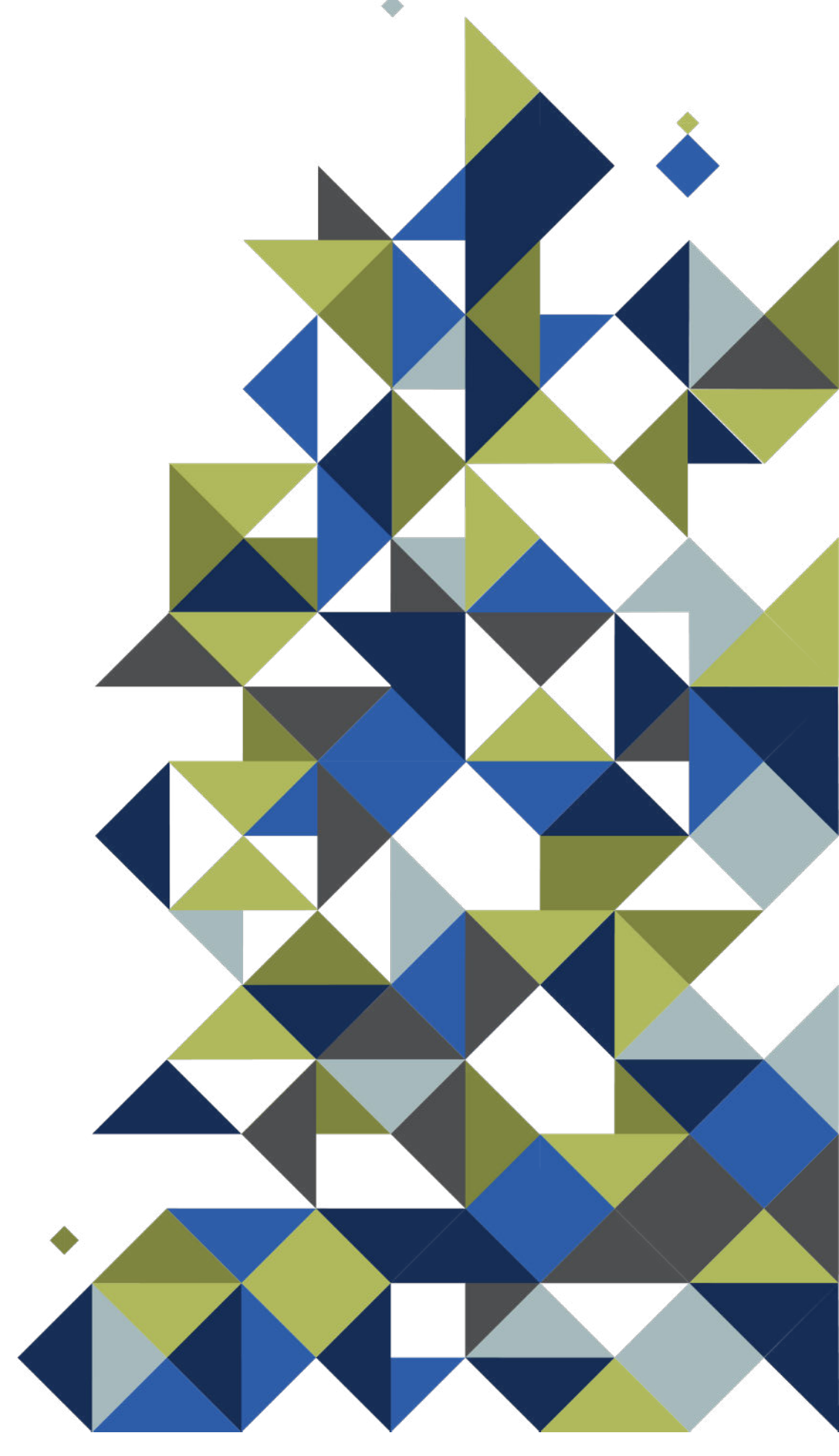
to call home.



3 Bed 2 Bath
1431 - 1509 Sq Ft



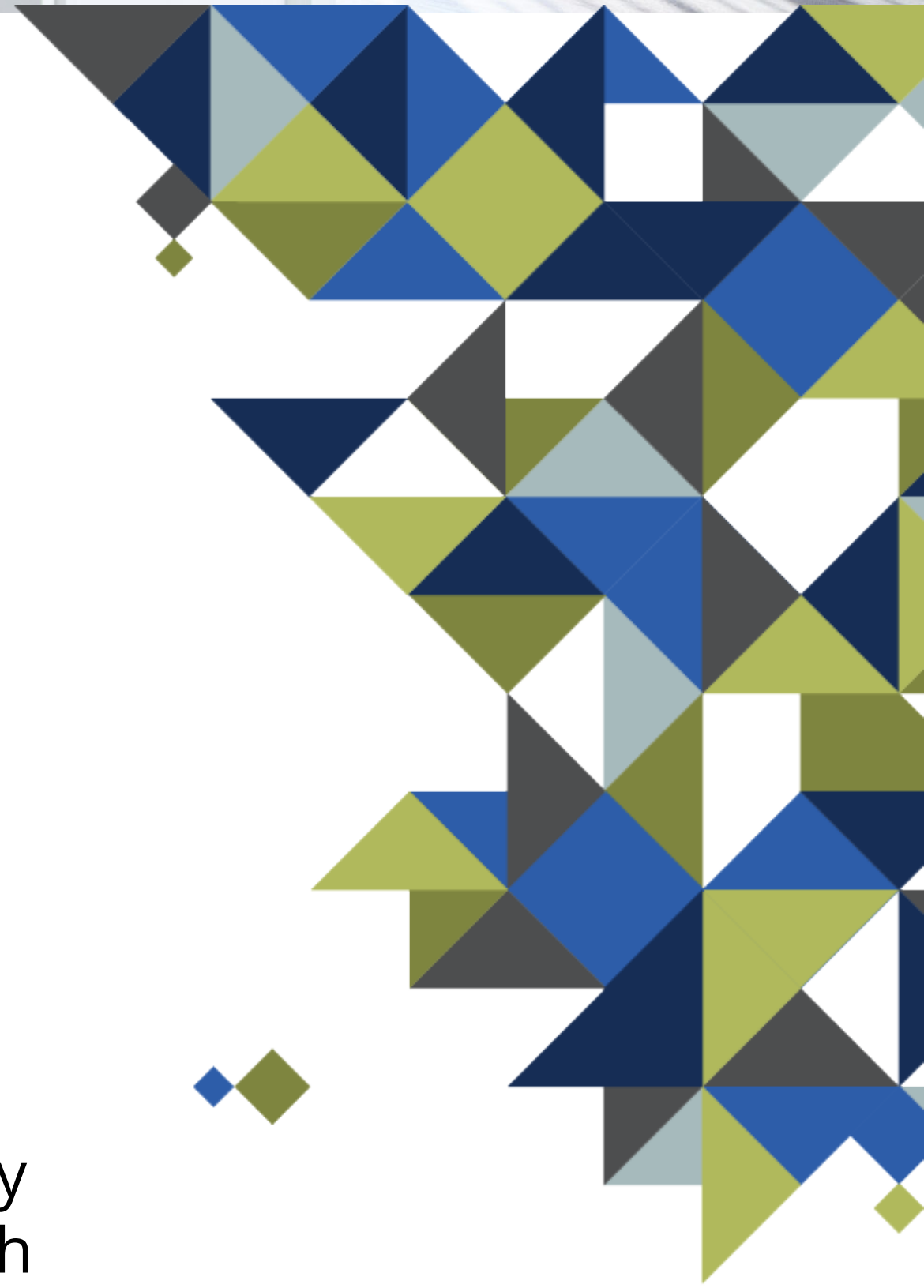
2 Bed 2 Bath
1098 - 1207 Sq Ft





YOUR APARTMENT

- ◇ Side-by-Side Refrigerator with Ice/Water Dispenser
- ◇ Large Kitchen Sink with Disposal
- ◇ Full-Sized Washer and Dryer in Every Apartment
- ◇ 9 Ft. Ceilings
- ◇ Programmable Digital Thermostat
- ◇ Large Walk-In Closets
- ◇ Wood Plank Flooring in Kitchen and Living Areas
- ◇ Stainless Steel GE Kitchen Appliances
- ◇ Run-Quiet Dishwasher
- ◇ Eat-At Kitchen Island
- ◇ Premium Cabinetry in Kitchen and Bath
- ◇ Private Balcony or Patio in Select Homes
- ◇ Central AC & Heat
- ◇ Premium Carpeting in Bedrooms
- ◇ Cable and High Speed Internet Ready
- ◇ Stone Counter Tops
- ◇ Above-Range Microwave





YOUR COMMUNITY

- ◇ Professional On-Site Management Team
- ◇ Off-Street Parking
- ◇ Storage Available
- ◇ Smoke-Free Community
- ◇ 24/7 On-Site Maintenance
- ◇ Community Club Room
- ◇ Elevator-Serviced Community
- ◇ High-Speed Internet
- ◇ Package Concierge
- ◇ Community Conference Room/Work from Home Space
- ◇ Controlled Access
- ◇ Pets Welcome (Some Breed Restrictions Apply)



www.princetonproperties.com

