

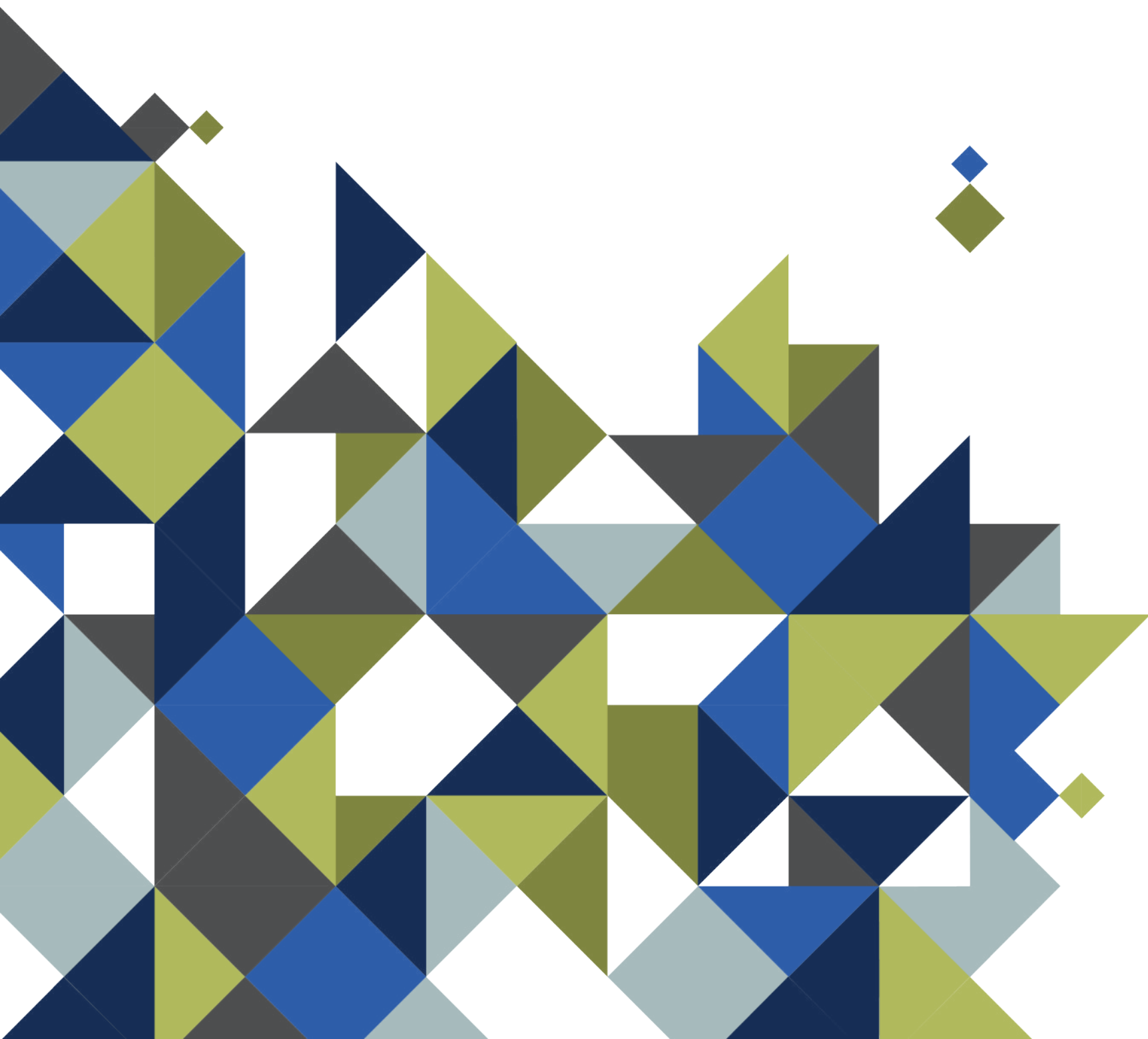


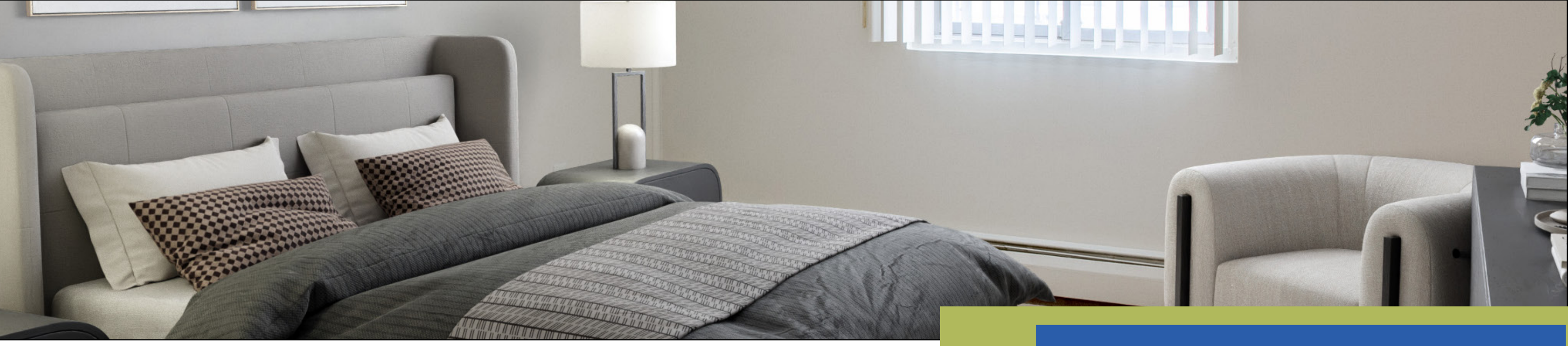
LIVE AT

PRINCETON BELVIDERE APARTMENTS

Located in Lowell's most elegant and historic residential neighborhood, and nestled on the corner of Andover Street and Park Street, this quaint community offers a cozy, close knit feel, while remaining just minutes away from the Lowell Connector, Route 3, I-495, and the UMass Lowell campuses. While living at Princeton Belvidere you can also enjoy easy access to the Tsongas Center, Historic Parks of Downtown Lowell, Mill No. 5, and Lowell General Hospital's Saints Campus.

Residents can rest easy, knowing our dedicated teams of management and maintenance staff are here for you, at Princeton Belvidere. With 24/7 emergency maintenance, we're always here to help you resolve any issues quickly, and conveniently.

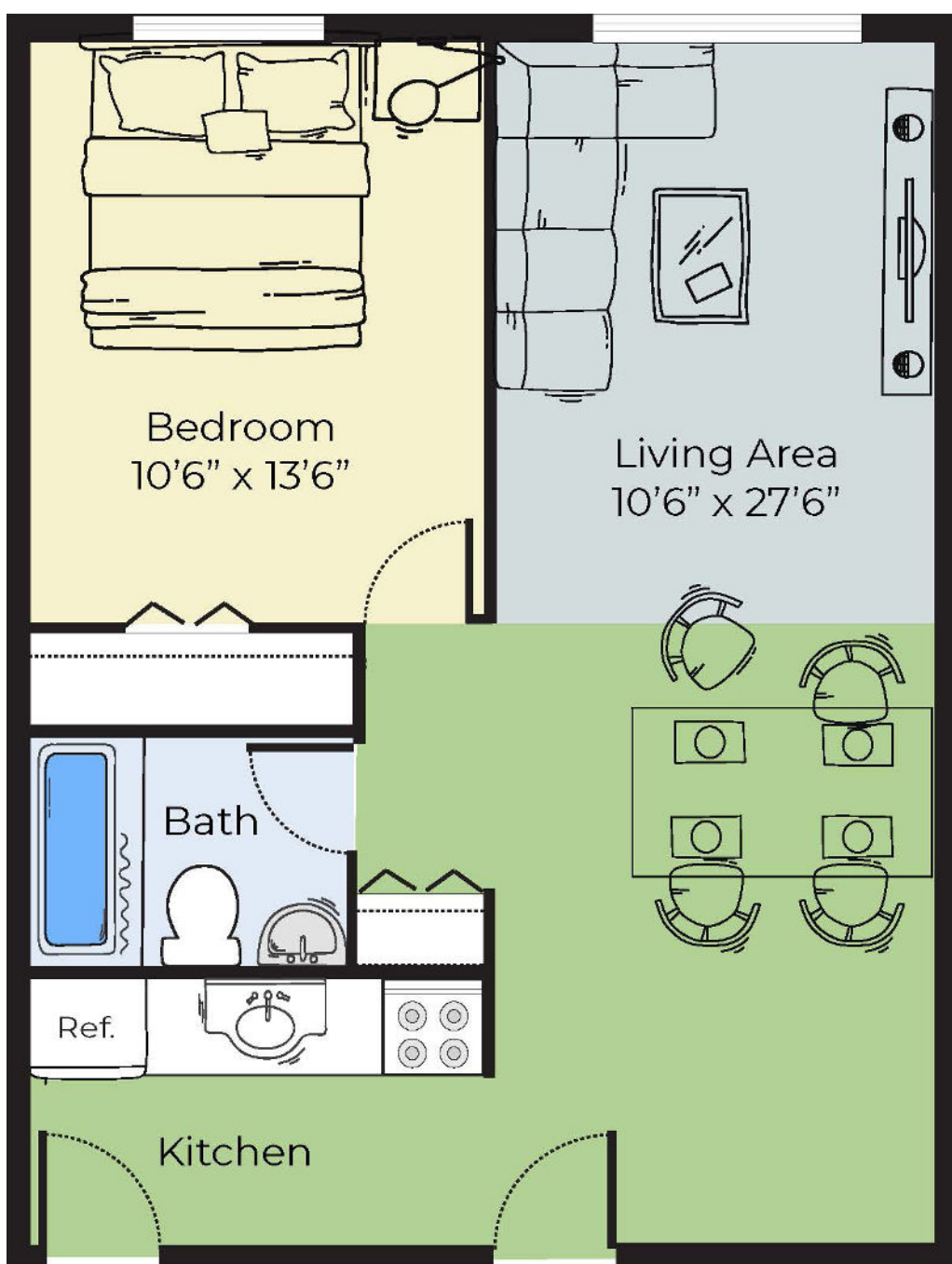




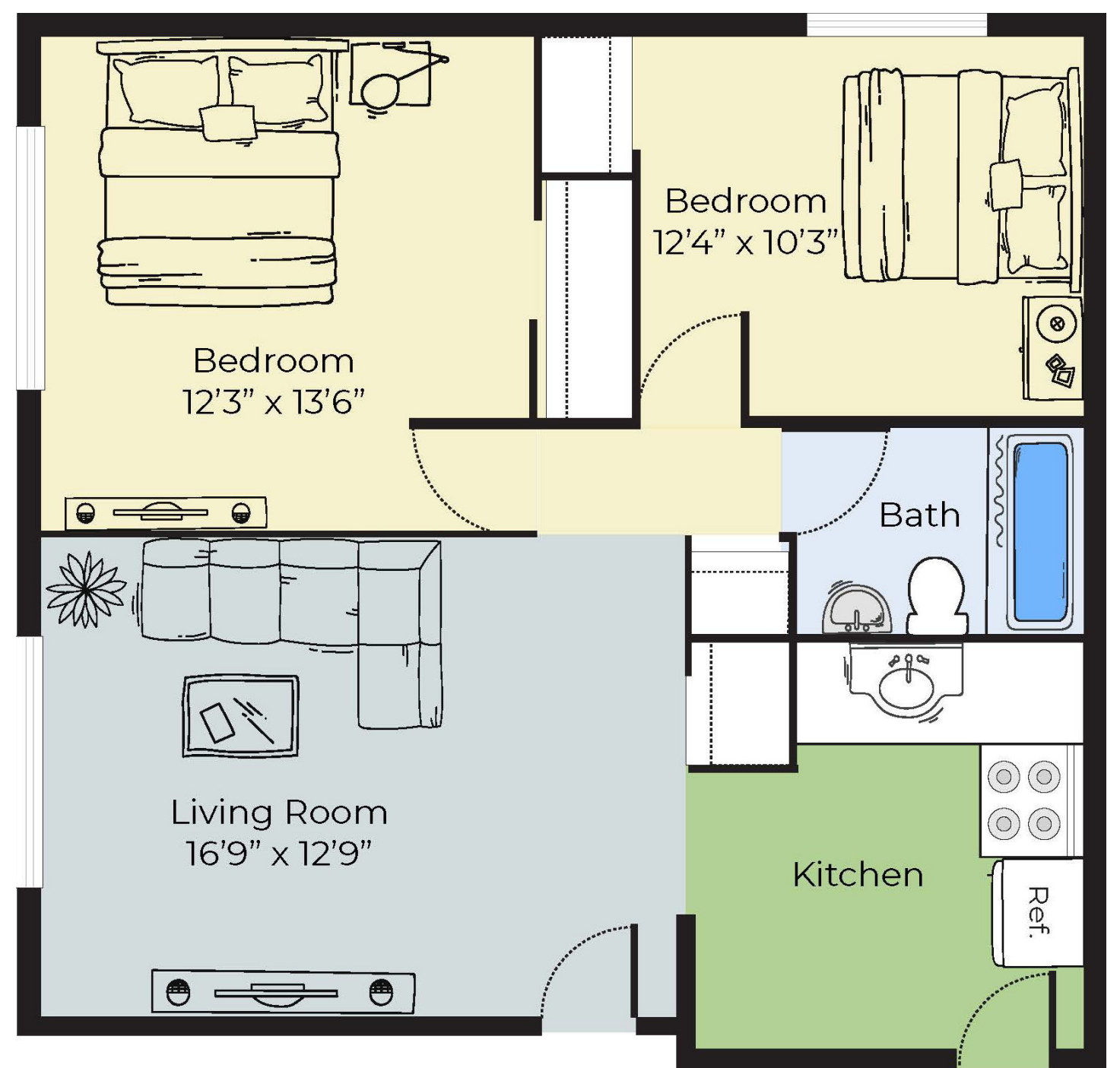
FIND THE APARTMENT

that suits your needs.

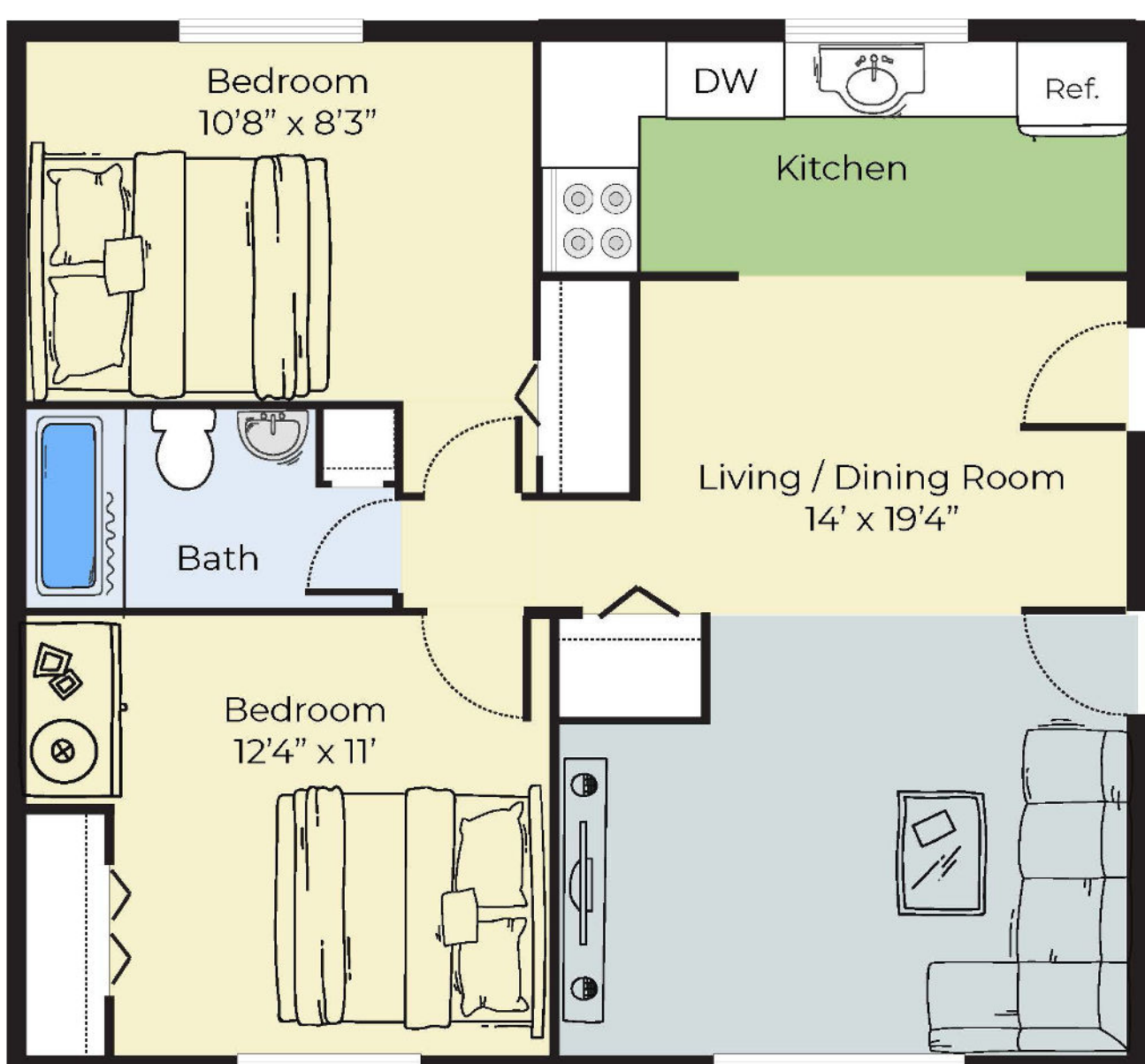
The Princeton Belvidere Apartments offer amenities to fit all residential needs, from completely remodeled and fully equipped kitchens, air conditioning, and heat/hot water included in your rent, to on site laundry, off street parking, and beautifully manicured grounds.



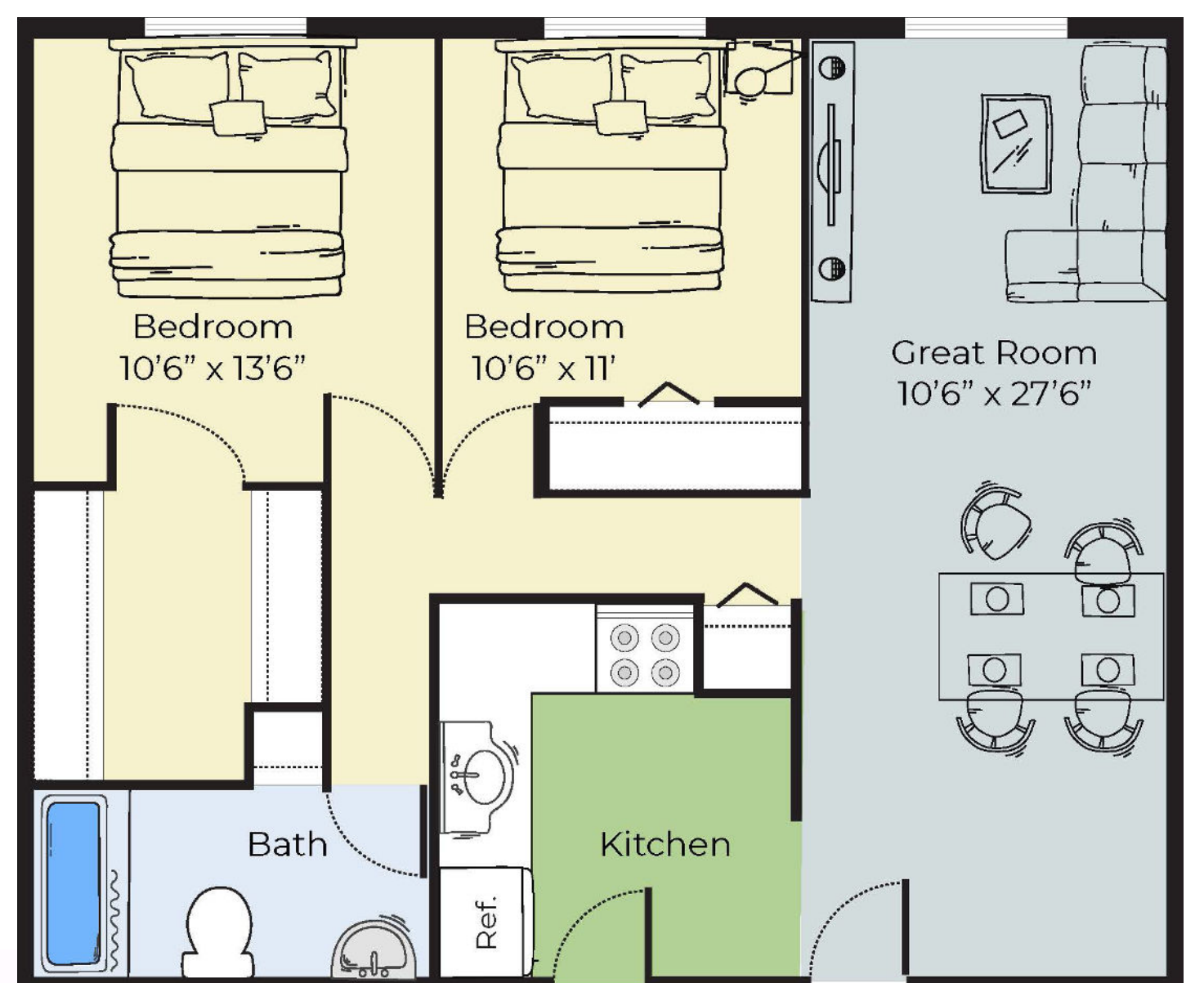
1 Bed 1 Bath
600 Sq Ft



2 Bed 1 Bath
720 Sq Ft



3 Bed 1.5 Bath
1055 Sq Ft



2 Bed 1 Bath
720 Sq Ft



YOUR APARTMENT

- ◇ Spacious Closets
- ◇ Individually Controlled Thermostats
- ◇ Gas Stove
- ◇ Air Conditioning
- ◇ High Speed Internet and Cable Ready
- ◇ Dishwasher
- ◇ Fully Appointed Kitchens
- ◇ Premium Wall-to-Wall Carpeting
- ◇ Window Treatments
- ◇ Heat and Hot Water Included





YOUR COMMUNITY

- ◇ Flexible Rent Payments with FLEX
- ◇ 24 Hour Emergency Maintenance
- ◇ Laundry Facilities
- ◇ Intercom System
- ◇ Off-Street Parking
- ◇ Pet Friendly (some breed restrictions apply)
- ◇ Easy Highway Access
- ◇ Kitteredge Park Located Across the Street
- ◇ Located in Lowell's Most Desirable Neighborhood
- ◇ Virtual Tours Available
- ◇ Online Rent Pay and Resident Services through Resident Portal



www.princetonproperties.com

